

Safeguarding and Child Protection Policy

Croyland Primary School

September 2024

PERSON RESPONSIBLE FOR POLICY:	<i>LUCY DEAKIN</i>
APPROVED:	<i>SEPTEMBER 2024</i>
SIGNED:	<i>HEADTEACHER</i>
TO BE REVIEWED:	<i>SEPTEMBER 2025 OR AS REQUIRED</i>

At Croyland Primary School the named personnel with designated responsibility for safeguarding are:

Designated Safeguarding Lead	Deputy Designated Safeguarding Lead(s)	Safeguarding Governor and Chair of Governors
<i>Lucy Deakin</i>	<i>Kelly Collins Chris Baillie Sam Mitchell Luke Carroll</i>	<i>Tracy Elliott</i>

The named personnel with Designated Responsibility regarding allegations against staff are:

Designated Senior Manager (normally the Headteacher)	Deputy Designated Senior Manager	Chair of Governors/Proprietor (in the event of an allegation against the Headteacher) OR LADO if Headteacher is the sole proprietor
<i>Lucy Deakin</i>	<i>Kelly Collins</i>	<i>Tracy Elliott</i>

Contents

1. Aim of policy.....	1
2. Scope.....	2
3. Definitions.....	2
4. Legislation and statutory guidance.....	4
5. Equality Statement.....	5
6. Confidentiality and Information Sharing.....	5
7. Roles and responsibilities.....	7
8. Recognising Abuse: Training.....	12
9. Recognising and responding to abuse: How to take action.....	14
10. Specific safeguarding issues.....	18
11. Pupils with special educational needs and disabilities (SEND).....	21
12. Pupils with a social worker and those that have previously needed a social worker.....	21
13. Looked after and previously looked after children.....	22
14. Record-keeping.....	22
15. Relationships, sex and health education (RSHE).....	23
16. Safer working practice.....	24
17. Safeguarding concerns about and allegations against members of staff.....	25
18. Complaints and concerns about school safeguarding policies.....	27
20. Policy implementation, monitoring and review.....	28
Appendix A: Child on child abuse.....	29
Appendix B: Types of abuse.....	35
Appendix C: Safer recruitment.....	45
Appendix D: How the school responds to allegations that may meet the harms threshold.....	49
Appendix E: Online Safety.....	54
Appendix F: Child Protection and Safeguarding Information for Visitors.....	0
Appendix G: How We Safeguard Children at Croyland Primary School; A Guide for Parents.....	2
Appendix H: Safeguarding Poster.....	0
Appendix I: Online Safety Poster.....	Error! Bookmark not defined.
Appendix J: DSL Job Description.....	1
Appendix K: ACEs (Adverse Childhood Experiences).....	3

1. Aim of policy

Croyland Primary School recognises our statutory responsibility to safeguard and promote the welfare of all pupils. We will endeavour to provide a safe and welcoming environment where children are respected and valued. We will be alert to the signs of abuse, neglect and exploitation and follow our procedures to ensure that children receive effective support, protection and justice.

Safeguarding is everyone's responsibility. We recognise that our school is part of a wider safeguarding system and work closely with the Northamptonshire Safeguarding Children Partnership and other agencies to promote the welfare of children. We maintain an attitude of 'it could happen here' and will consider the wishes of, and at all times, what is in the best interests of each child.

We understand that children can be abused by adults or by other children. We are committed to creating a culture of safety, that minimises the opportunity for any form of abuse (including all forms of child on child abuse) through training, education and robust response procedures.¹

The aim of this policy is to;

- promote safeguarding and child protection and to provide information about how we work to keep children safe here at Croyland Primary School;
- **ensure that all staff are aware of and clearly understand their statutory safeguarding responsibilities;**
- provide all members of staff with the information required to **meet their safeguarding duty and protect children from harm;**
- provide the governing body with clear information relating to the school's safeguarding and child protection procedures; and to
- ensure that we are protecting children from maltreatment or harm.

2. Scope

This policy applies to all teaching, non-teaching, support, supply, peripatetic, contract staff, governors, out-of-school provision staff, volunteers and trustees working in or on behalf of Croyland Primary School. All references in this document to 'staff' or 'members of staff' should be interpreted as relating to the aforementioned unless otherwise stated.

3. Definitions

Safeguarding and promoting the welfare of children is defined in Keeping Children Safe in Education (KCSIE) 2024 as;

- providing help and support to meet the needs of children as soon as problems emerge;
- protecting children from maltreatment, whether that is within or outside the home, including online;
- preventing the impairment of children's mental and physical health or development;
- ensuring sure that children grow up in circumstances consistent with the provision of safe and effective care;
- taking action to enable all children to have the best outcomes.

Child protection is part of safeguarding and refers to activities undertaken to prevent children suffering, or being likely to suffer, significant harm.

¹ For full details about how we work to prevent and respond to child on child abuse, please see Appendix B.

Abuse is a form of maltreatment of a child. Somebody may abuse or neglect a child by inflicting harm or by failing to act to prevent harm. Harm can include ill treatment that is not physical as well as the impact of witnessing ill treatment of others. This can be particularly relevant, for example, in relation to the impact on children of all forms of domestic abuse, including where they see, hear or experience its effects. Children may be abused in a family or in an institutional or community setting by those known to them or, more rarely, by others. Abuse can take place wholly online, or technology may be used to facilitate offline abuse. Children may be abused by an adult or adults or by another child or children.

Neglect is a form of abuse and is the persistent failure to meet a child's basic physical and/or psychological needs, likely to result in the serious impairment of the child's health or development².

Child on child abuse refers to the abuse of a child or children perpetrated by another child or children. Child on child abuse is most likely to include, but may not be limited to:

- bullying (including cyberbullying, prejudice-based and discriminatory bullying);
- abuse in intimate personal relationships between children (sometimes known as 'teenage relationship abuse');
- physical abuse such as hitting, kicking, shaking, biting, hair pulling, or otherwise causing physical harm (this may include an online element which facilitates, threatens and/or encourages physical abuse);
- sexual violence, such as rape, assault by penetration and sexual assault (this may include an online element which facilitates, threatens and/or encourages sexual violence);
- sexual harassment, such as sexual comments, remarks, jokes and online sexual harassment, which may be standalone or part of a broader pattern of abuse;
- causing someone to engage in sexual activity without consent, such as forcing someone to strip, touch themselves sexually, or to engage in sexual activity with a third party;
- consensual and non-consensual sharing of nudes and semi-nude images and or videos (also known as sexting or youth produced sexual imagery);
- upskirting, which typically involves taking a picture under a person's clothing without their permission, with the intention of viewing their genitals or buttocks to obtain sexual gratification, or cause the victim humiliation, distress or alarm; and;
- initiation/hazing type violence and rituals (this could include activities involving harassment, abuse or humiliation used as a way of initiating a person into a group and may also include an online element).³

Children includes everyone under the age of 18.

Within this policy:

- '**Parent**' refers to birth parents and other adults in a parenting role for example adoptive parents, step parents kinship carers and foster carers.
- '**Staff**' or '**members of staff**' refers to all teaching, non-teaching, support, supply, peripatetic, contract staff, governors, volunteers and trustees working in or on behalf of Croyland Primary School.
- Keeping Children Safe in Education (2024) may be abbreviated to 'KCSIE'.

Victim is a widely understood and recognised term, but we understand that not everyone who has been subjected to abuse considers themselves a victim, or would want to be described that way. When managing an incident, we will be prepared to use any term that the child involved feels most comfortable with.

² See Appendix C for more information about abuse and neglect.

³ Keeping Children Safe in Education (2024)

Alleged perpetrator(s) and **perpetrator(s)** are widely used and recognised terms. However, we will think carefully about what terminology we use (especially in front of children) as, in some cases, abusive behaviour can be harmful to the perpetrator too. We will decide what's appropriate and which terms to use on a case-by-case basis.

The school remit of safeguarding is vast and encompasses the headings in the diagram below. Subsidiary policies list the systems and practices that ensure the children are safe and their welfare is promoted.

4. Legislation and statutory guidance

The school adheres to all relevant safeguarding legislation, statutory guidance and guidance from the Northamptonshire Safeguarding Children Partnership. This includes:

Statutory Guidance

- Keeping Children Safe in Education (2024)
- Working Together to Safeguard Children (2023)
- Early Years Foundation Stage (2024)
- Working together to improve school attendance (2024)
- Children missing education (statutory for local authorities) (2016)

Legislation

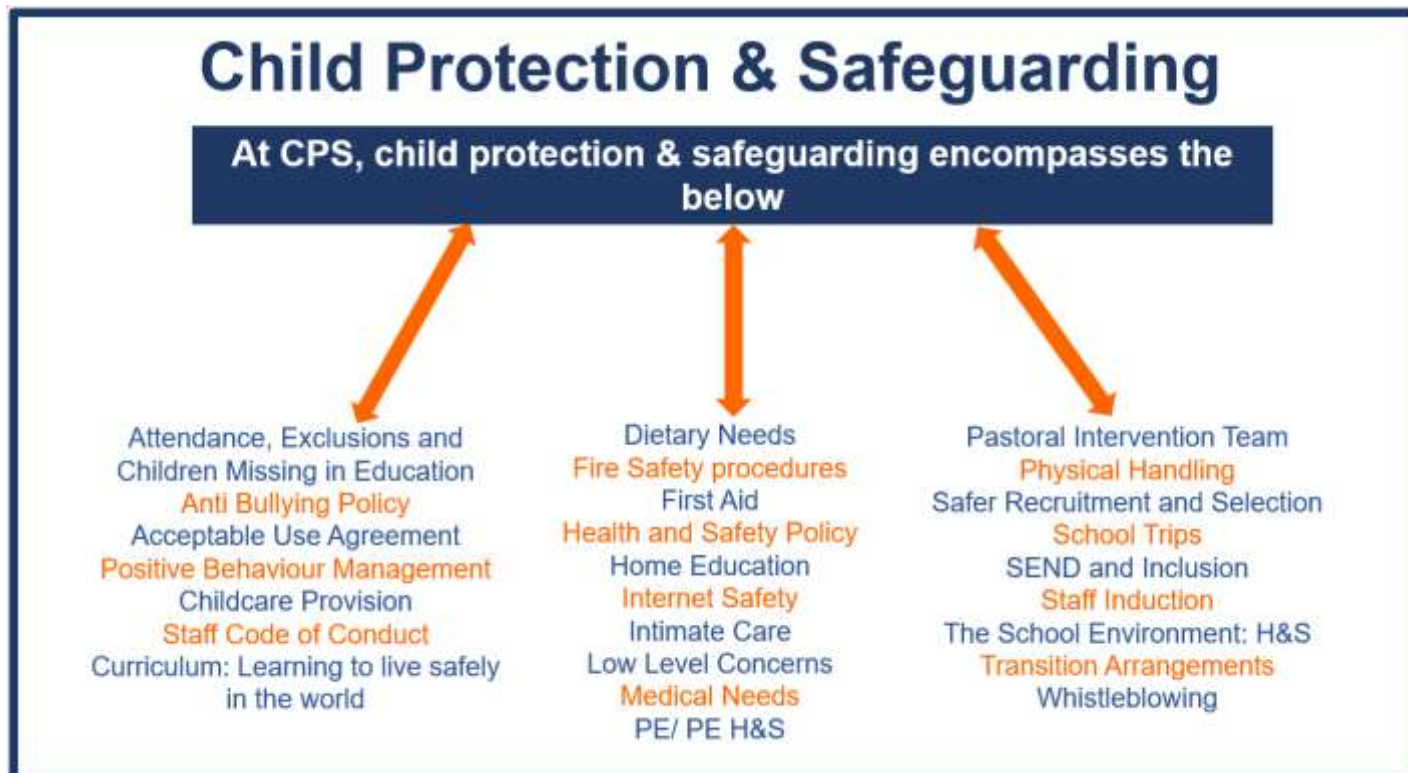
- The Children Act 1989 and The Children Act 2004
- Section 5B(11) of the Female Genital Mutilation Act 2003, as inserted by section 74 of the Serious Crime Act 2015
- The Rehabilitation of Offenders Act 1974
- Safeguarding Vulnerable Groups Act 2006
- Counter-Terrorism and Security Act 2015 (and the Prevent Duty guidance, updated 2023)
- The Education Act 2002
- The School Staffing (England) Regulations 2009
- The Childcare (Disqualification) Regulations 2009 (and 2018 amendment)
- The Childcare Act 2006 (all schools with pupils aged under 8)
- **The Human Rights Act 1998**, which explains that being subjected to harassment, violence and/or abuse, including that of a sexual nature, may breach any or all of the rights which apply to individuals under the European Convention on Human Rights (ECHR)
- **The Equality Act 2010**, which makes it unlawful to discriminate against people regarding particular protected characteristics (including disability, sex, sexual orientation, gender reassignment and race). This means our governors and Headteacher should carefully consider how they are supporting their pupils with regard to these characteristics. The Act allows our school to take positive action to deal with particular disadvantages affecting pupils (where we can show it is proportionate). This includes making reasonable adjustments for disabled pupils. For example, it could include taking positive action to support girls where there is evidence that they are being disproportionately subjected to sexual violence or harassment
- **The Public Sector Equality Duty (PSED)**, which explains that we must have due regard to eliminating unlawful discrimination, harassment and victimisation. The PSED helps us to focus on key issues of concern and how to improve pupil outcomes. Some pupils may be more at risk of harm from issues such as sexual violence; homophobic, biphobic or transphobic bullying; or racial discrimination

Guidance from the Northamptonshire Safeguarding Children Partnership (NSCP) can be found here: <http://www.northamptonshirescb.org.uk/>.

The school also has regard relevant to non-statutory guidance relating to safeguarding, including:

- What to do if you are worried a child is being abused (2015)
- Guidance for safer working practice for those working with children and young people in education settings
- Sexual violence and sexual harassment between children in schools and colleges (2021)

This policy links with other school policies and procedures:



Our public health emergency (COVID-19) procedures can be found at Appendix A.

5. Equality Statement

Some children have an increased risk of abuse, and additional barriers can exist for some children with respect to recognising or disclosing it. We are committed to anti-discriminatory practice and recognise children's diverse circumstances. Some children are at an increased risk of abuse, and additional barriers can exist for some children with respect to recognising or disclosing it. We ensure that all children have the same protection, regardless of any barriers they may face.

Please see Section 11 for further details about how we work to support children with special educational needs and disabilities (SEND).

6. Confidentiality and Information Sharing

Information sharing is vital in identifying and tackling all forms of abuse, neglect and exploitation, and in promoting children's welfare, including their educational outcomes. Schools and colleges have clear powers to share, hold and use information for these purposes. **The General Data Protection Regulation (GDPR) does not prevent, or limit, the sharing of information for the purposes of keeping children safe.** Lawful and secure information sharing between schools, Children's Social

Care, and other local agencies, is essential for keeping children safe and ensuring they get the support they need.

The school adheres to the Data Protection Act (2018) and the General Data Protection Regulation (2018). Please see the Data Protection Policy and Privacy Notice for more information.

6.1 Sharing information with parents

Croyland Primary School will ensure the Safeguarding and Child Protection Policy is available publicly via the school website.

Where appropriate, we will discuss any concerns about a child with the child's parents. The Designated Safeguarding Lead (DSL) will normally do this in the event of a concern, suspicion or disclosure. Other staff will only talk to parents about any such concerns following consultation with the DSL.

If we believe that notifying the parents would increase the risk to the child, we will discuss this with the local authority children's social care team before doing so (see Section 6.2 for more details). In the case of allegations of abuse made against other children, we will normally notify the parents of all the children involved.

6.2 Consent

The Data Protection Act 2018 introduced 'safeguarding' as a reason to be able to process sensitive, personal information, even without consent (DPA, Part 2, 18; Schedule 8, 4). All relevant information can be shared without consent if to gain consent would place a child at risk. Fears about sharing information must not be allowed to stand in the way of promoting the welfare and protecting the safety of children. All professionals responsible for children should not assume that someone else will pass on information that they think may be critical to keeping a child safe.

As with all data sharing, appropriate organisational and technical safeguards are in place and will be adhered to when processing safeguarding and child protection information.

When considering whether, or not, to share safeguarding information (especially with other agencies), Croyland Primary School will record who they are sharing that information with and for what reason. If we have taken a decision not to seek consent from the data subject and/or parent that will be recorded within the safeguarding file.

All staff in school will be made aware of their duties in relation to Data Protection and safeguarding, **particularly in respect of confidentiality**. This includes the following:

- **Staff should never promise a child that they will not tell anyone about an allegation, as this may not be in the child's best interests.**
- **Staff who receive information about children and their families in the course of their work should share that information only within appropriate professional contexts.**
- **Timely information sharing is essential to effective safeguarding.**
- **Information must only be shared on a 'need-to-know' basis, but consent is not required to share information if a child is suffering, or at risk of, serious harm.⁴**

⁴ See Working Together to Safeguard Children (2023)

7. Roles and responsibilities

Safeguarding and child protection is everyone's responsibility. This policy applies to all staff, volunteers and governors in the school and is consistent with the procedures of the 3 safeguarding partners. Our policy and procedures also apply to extended school and off-site activities.

7.1 Governing bodies and proprietors

Governing bodies and proprietors have a strategic leadership responsibility for the school's safeguarding arrangements. The governing body will appoint a senior board level (or equivalent) Governor Safeguarding Lead to monitor the effectiveness of this policy in conjunction with the full governing board. This is always a different person from the DSL. **The Governor Safeguarding Lead is Tracy Elliott.**

Governors/proprietors will ensure that there are mechanisms in place to assist staff in understanding and discharging their statutory safeguarding roles and responsibilities. Governors will ensure that the school is working with local safeguarding partners and that the school contributes to multi-agency working, adhering to Working Together to Safeguard Children. All governors will read KCSIE (2024) and a record will be kept of this.

Part 2 of KCSIE (2024) sets out the responsibilities of governing bodies and our school governors will adhere to this guidance at all times. As part of these responsibilities the governors will;

- ensure that they comply with their duties under statutory guidance and legislation; including its obligations under the Human Rights Act 1998, the Equality Act 2010 (including the Public Sector Equality Duty), and our school's local multi-agency safeguarding arrangements;
- work to facilitate a whole school approach to safeguarding, by ensuring that safeguarding and child protection underpin all relevant aspects of policy and process;
- ensure that policies, procedures and training at the school are effective and comply with the law at all times and that they allow concerns to be responded to in a timely manner;
- ensure that safeguarding training for staff, including online safety training, is integrated, aligned and considered as part of the whole school or college safeguarding approach and wider staff training and curriculum planning;
- ensure that the school takes into account local criteria for action and protocol for assessment and supply information as requested by the three safeguarding partners;
- ensure that the school has an effective safeguarding and child protection policy, which is published on the school website and/or available by other means and review this annually;
- ensure that the school has systems in place to allow children to raise concerns, which are well-promoted, well-understood and easily accessible;
- ensure that the school takes safeguarding concerns seriously and takes the wishes and feelings of children into account;
- ensure that there are systems in place for children to safely express their views and give feedback on safeguarding practice;
- ensure that the school has a suitable behaviour policy for pupils and a staff behaviour policy or Code of Conduct;
- ensure that all staff undergo safeguarding and child protection training on induction;
- consider a whole-school approach to online safety, including the use of mobile technology in school;
- ensure that there are clear systems and processes in place for identifying when children may be experiencing mental health problems;
- ensure that children are taught about safeguarding, including online safety. See section 10.6 and Appendix F of this policy for further information;

- ensure that an appropriate safeguarding response for children who go missing from education is in place;
- appoint an appropriate member of staff from the senior leadership team to the role of Designated Safeguarding Lead; and ensure that the DSL has the appropriate status and authority to carry out their job, including additional time, funding, training, resources and support;
- ensure that appropriate filters and monitoring systems are in place to keep children safe online and *that governing bodies and proprietors should regularly review the effectiveness of school filters and monitoring systems. They should ensure that the leadership team and relevant staff are:*
 - *aware of and understand the systems in place*
 - *manage them effectively*
 - *know how to escalate concerns when identified*
- ensure that there are appropriate procedures in place to manage safeguarding concerns, or allegations against staff including allegations that do not meet the harm threshold (low-level concerns) about staff members (including supply staff, volunteers and contractors). Appendix E of this policy covers this procedure and;
- respond to allegations of abuse against the Headteacher. The Chair of Governors will act as the 'case manager' in the event that an allegation of abuse is made against the Headteacher, where appropriate (see Appendix E).

7.2 The Headteacher

The Headteacher is responsible for the implementation of this policy. The Headteacher will:

- ensure that this policy is reviewed annually and ratified by the governing body;
- ensure that this policy and associated procedures are adhered to by all staff and take action as necessary if not;
- ensure that staff (including temporary staff) and volunteers are informed of our systems that support safeguarding, including this policy, as part of their induction.
- ensure that all staff are made aware of the named governor for safeguarding and the Designated Safeguarding Lead;
- ensure that the role of 'Designated Safeguarding Lead' is explicit in the role-holder's job description, that they have appropriate time, funding, training and resources and that there is always adequate cover if the DSL is absent;
- decide whether to have one or more deputy safeguarding leads and ensure they are trained to the same standard as the Designated Safeguarding Lead;
- organise appropriate cover for the role of Designated Safeguarding Lead for any out of hours/out of term activities;
- appoint a 'Designated Teacher for Looked After and Previously Looked After Children' (**Lisa Carroll**) to promote the educational achievement of children looked after and previously looked after;
- appoint a lead for online safety (**Luke Carroll**)
- ensure that all recruitment follows the safer recruitment guidance (see Part 3 of KCSIE) and a single, central record is maintained with details of all members of staff who are in contact with children;
- respond to allegations of abuse against all other members of staff and act as the 'case manager' in the event of an allegation of abuse made against another member of staff or volunteer, where appropriate;
- make decisions regarding all reported low-level concerns,
- refer cases where a person is dismissed or left due to risk/harm to a child to the Disclosure and Barring Service as required;
- ensure that the school works with social care, the police, health services and other services to;

promote the welfare of children; provide a co-ordinated offer of early help when need is identified; contribute to inter-agency plans for children subject to children protection plans and to protect children from harm;

- safeguard children's wellbeing and maintain public trust in the teaching profession as part of their professional duties (Teaching Standards, 2012);
- ensure that children's social care (from the host local authority or placing authority) have access to the school to conduct, or to consider whether to conduct a section 47 or section 17 assessment, as per Keeping Children Safe in Education (September 2024);
- ensure the relevant staffing ratios are met, where applicable (Early years providers and primary schools); and
- make sure each child in the Early Years Foundation Stage is assigned a key person (Early years providers).

7.3 The Designated Safeguarding Lead (DSL)

The full responsibilities of the DSL are set out in Annex C, KCSIE (2024).

The DSL is a member of the Senior Leadership Team. Our DSL is Lucy Deakin, Headteacher. The DSL takes lead responsibility for child protection and wider safeguarding.

Due to the nature and the size of the school, Croyland Primary School has 5 DDSL (Deputy Designated Safeguarding Leads); Mrs Kelly Collins, Mrs Chris Baillie, Miss Sam Mitchell & Mr Luke Carroll will act as cover.

All deputies will be trained to the same standard as the designated safeguarding lead.

Whilst the activities of the designated safeguarding lead can be delegated to appropriately trained deputies, at CPS, the ultimate **lead responsibility** for child protection, as set out above, remains with the designated safeguarding lead; this **lead responsibility** should not be delegated.

The Designated Safeguarding Lead will;

- Act as a source of support and expertise on matters relating to safeguarding and child protection to ensure that other members of staff can carry out their safeguarding duty;
- Advise on the response to safeguarding concerns;
- Liaise with the Local Authority and work with other agencies in line with 'Working Together to Safeguard Children';
- Identify if children may benefit from early help;
- Refer suspected cases, as appropriate, to the relevant body (local authority children's social care, Channel programme, Disclosure and Barring Service, and/or police), and support staff who make such referrals directly
- Make referrals to the Channel programme where there is a radicalisation concern and/or support staff that make a referral to Channel;
- Support the school with regards to their responsibilities under the Prevent duty and provide advice and support on protecting children from radicalisation;
- Refer cases to the police where a crime may have been committed;
- Be available during school or college hours for staff to discuss any safeguarding concerns. In the event that they are not available, a deputy will be made available;
- **Undertake training to equip them with the skills to carry out the role and update this every two years;**
- Ensure all staff that work directly with children have read and understood Part 1 and Annex B of Keeping Children Safe in Education (September 2024);
- Ensure all staff that do not work directly with children have read either Part 1 or Annex A (as appropriate) of Keeping Children Safe in Education (2024);

- Update their knowledge and skills regularly and keep up with any developments relevant to their role;
- Provide staff in school with the knowledge, skills and support required to safeguard children;
- Take responsibility for the accurate and timely recording of safeguarding and child protection concerns and take overall responsibility for safeguarding and child protection files;
- Take responsibility for the transfer of safeguarding files when a child leaves the school;
- Attend or ensure an appropriate representative attends multi-agency safeguarding or child protection meetings;
- Work closely with other relevant education professionals (e.g. SENCO, Virtual School Head) to ensure children with additional vulnerabilities are safeguarded;
- Help to promote educational outcomes of children who have experienced or are experiencing safeguarding or child protection issues by sharing relevant information with teachers and the school leadership team; The DSL(s) will take lead responsibility for promoting educational outcomes by knowing the welfare, safeguarding and child protection issues that children in need are experiencing, or have experienced, and identifying the impact that these issues might be having on children's attendance, engagement and achievement. This will include understanding their academic progress and attainment and maintaining a culture of high aspirations for this cohort and supporting teaching staff to provide additional academic support or reasonable adjustments to help children who have or have had a social worker reach their potential.
- We recognise that a child's experiences of adversity and trauma can leave them vulnerable to further harm, as well as educationally disadvantaged in facing barriers to attendance, learning, behaviour and mental health. The DSL will use the information that they hold about children with a social worker to make decisions in the best interests of the child's safety, welfare and help promote educational outcomes. The DSL will ensure that staff, know who these children are, understand their academic progress and attainment and maintain a culture of high aspirations for this cohort; supporting teaching staff to identify the challenges that children in this group might face and the additional academic support and adjustments that they could make to best support these children.
- Promote a 'culture of safeguarding', in which every member of the school community acts in the best interests of the child;
- Regularly meet with the safeguarding link governor and/or Chair of Governors to review safeguarding at the school; and
- Liaise with the Headteacher regarding safeguarding cases and issues.
- Have a good understanding of harmful sexual behaviour
- Know what local specialist support is available to support all children involved (including victims and alleged perpetrators) in sexual violence and sexual harassment, and be confident as to how to access this support
- Be aware that children must have an 'appropriate adult' to support and help them in the case of a police investigation or search

Lucy Deakin – ldeakin@croylandprimary.org.uk
Kelly Collins – kcollins@croylandprimary.org.uk
Chris Baillie – cbailie@croylandprimary.org.uk
Sam Mitchell – sammitchell@croylandprimary.org.uk
Luke Carroll – lcarrroll@croylandprimary.org.uk

7.4 All staff

Staff play a particularly important role because they are in a position to identify concerns in order to provide help for children. All staff;

- have a responsibility to provide a safe environment, where children can learn;
- will be trained so that they know what to do if a child tells them that he/she is being abused or neglected, including specific issues such as FGM, and how to maintain an appropriate level of confidentiality while liaising with relevant professionals;
- will be able to identify indicators of abuse, neglect and exploitation;
- will be made aware of systems in the school that support safeguarding and child protection;
- will be made aware of safeguarding issues that put children at risk of harm and behaviours associated with these risks;
- should ensure that they know what to do if a child makes a disclosure of abuse and never promise confidentiality when a child makes a disclosure;
- will be made aware of and should be clear on the school's or college's policy and procedures with regards to child on child abuse and the important role they have to play in preventing it and responding where they believe a child may be at risk from it;
- will be made aware of the early help process and understand their role in it;
- should be prepared to identify children who may benefit from early help and will discuss early help requirements with the safeguarding lead in the first instance;
- may be required to support social workers and other agencies following a referral;
- will be made aware of the process for making referrals to Children's Social Care (through the MASH), understand statutory assessments and the role that they may be expected to play in such assessments;
- should be prepared to make referrals to the MASH if they have concerns about a child's welfare and understand the role that they may be expected to play in such assessments;
- will receive regularly updated safeguarding and child protection training to cover all of the above, as well as online safety;
- will receive safeguarding updates throughout the year as part of continuous professional development;
- will be encouraged to contribute to the development of safeguarding policy and practice;
- should always seek advice from the Designated Safeguarding Lead if they are unsure; and
- all teachers should safeguard children's wellbeing and maintain public trust in the teaching profession as part of their professional duties (Teaching Standards, 2012).
- reinforce the importance of online safety when communicating with parents. This includes making parents aware of what we ask children to do online (e.g. sites they need to visit or who they'll be interacting with online)
- provide a safe space for pupils who are LGBT to speak out and share their concerns

All staff will be aware of:-

- *The fact that children can be at risk of harm inside and outside of their home, at school and online*
- *The fact that children who are (or who are perceived to be) lesbian, gay, bi or gender questioning (LGBT) can be targeted by other children*
- *What to look for to identify children who need help or protection*

All staff will be made aware of our systems and documents that support safeguarding, including this policy, the staff code of conduct, the role and identity of the designated safeguarding lead (DSL) and any deputies, the Promotion of Positive Behaviour Policy and the safeguarding response to children who go missing from education.

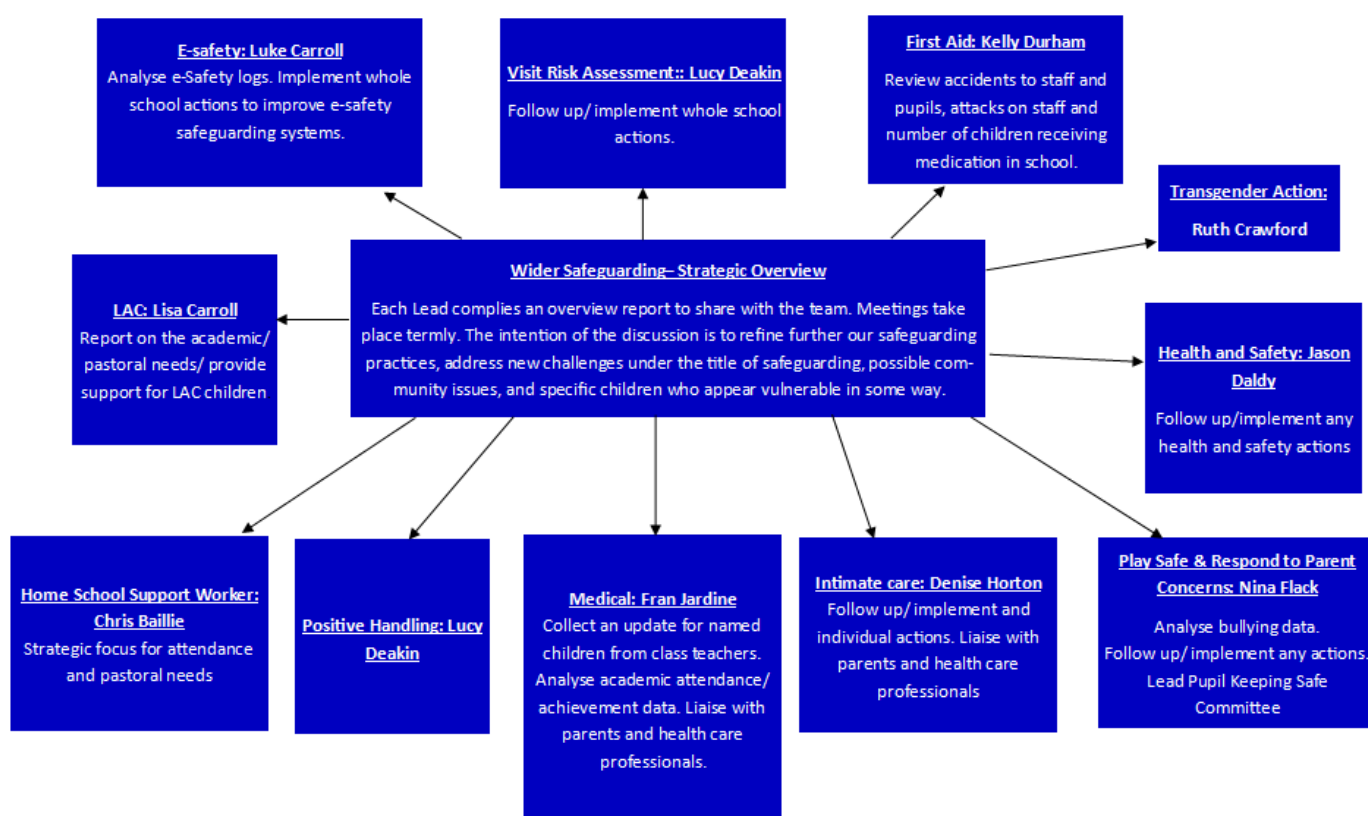
All staff that work directly with children will be provided with a copy of, and must read, Part 1 and Annex B of Keeping Children Safe in Education (September 2024) annually and will receive annually

updated training on their safeguarding roles and responsibilities. Staff that do not work directly with children will be provided with a copy of either Part 1 or Annex A of Keeping Children Safe in Education (2024) and must read this document.

All staff will sign a declaration at the beginning of each academic year to say that they have reviewed the guidance.

Although there are extensive mechanisms in place to support staff understanding in relation to safeguarding and child protection, there is an expectation that if staff are unclear on any aspects of school safeguarding policy or practice, they speak to the Designated Safeguarding Lead without delay, so that additional training can be put in place.

7.5 Individual Roles within Safeguarding



8. Recognising Abuse: Training

The school is committed to continuous professional development and all staff undergo rigorous and ongoing safeguarding training. We strive to ensure that staff fully understand their safeguarding responsibilities, that training promotes a culture of safeguarding and equips staff with the skills to identify any signs of abuse, neglect or harm.

8.1 All staff

- All staff members will undertake safeguarding and child protection training at induction (including online safety and whistle-blowing procedures) to ensure they understand the school's safeguarding systems, their responsibilities and can identify signs of possible abuse or neglect. This training will be regularly updated and will be in line with advice from the three safeguarding partners.
- All staff will have training on the government's anti-radicalisation strategy Prevent, to enable

- them to identify children at risk of being drawn into terrorism and to challenge extremist ideas.
- Staff will also receive regular safeguarding and child protection updates (for example, through emails, e-bulletins and staff meetings) as required, but at least annually.
 - Contractors who are provided through a private finance initiative (PFI) or similar contract will also receive safeguarding training.
 - Volunteers will receive appropriate training, as applicable.

Teachers will receive training to ensure that they can manage behaviour effectively to ensure a safe educational environment and they should have a clear understanding of the needs of all pupils.

8.2 The DSL and Deputy DSLs

- The DSL and Deputy DSLs will undertake child protection and safeguarding training at least every 2 years.
- In addition, they will update their knowledge and skills at regular intervals and at least annually (for example, through e-bulletins, meeting other DSLs, or taking time to read and digest safeguarding developments).
- They will also undertake Prevent awareness training and online safety training.
- SLT will also undertake Safer Recruitment Training.

8.3 Governors

- All governors receive safeguarding training (including online safety) at induction which is regularly updated, to make sure they have the knowledge and information needed to perform their functions and understand their responsibilities including providing strategic challenge and ensuring there is a whole school approach to safeguarding.
- As the chair of governors or proprietor may be required to act as the 'case manager' in the event that an allegation of abuse is made against the Headteacher, they should receive training in managing allegations for this purpose.

8.4 Recruitment – interview panels

At least one person conducting any interview for a post at the school will have undertaken **safer recruitment training**. This will cover, as a minimum, the contents of the Department for Education's statutory guidance, KCSIE (2024), and will be in line with local safeguarding procedures.

8.5 Supervision

- All staff who have contact with children will have access to supervision if they need it. Chris Baillie provides this.

8.6 Specific safeguarding issues

Staff will also receive specific training on the following issues and action will be taken if the school suspects that a child is at risk of or is the victim of;

- physical abuse;
- sexual abuse;
- child sexual exploitation;
- emotional abuse;
- neglect;
- child criminal exploitation (including involvement in county lines);
- domestic abuse;
- fabricated or induced illness;
- faith-based abuse;
- female genital mutilation;

- forced marriage;
- gangs or youth violence;
- gender-based violence;
- hate;
- online safety;
- child on child abuse;
- radicalisation;
- relationship abuse;
- serious violence;
- sexual violence or sexual harassment (including child on child abuse);
- sexting or sharing of youth produced sexual imagery;
- so-called 'honour-based' abuse;
- trafficking and modern slavery.

All staff will be made aware that safeguarding incidents and/or behaviours can be associated with factors outside the school or college and/or can occur between children outside of these environments (including online). All staff are expected to consider whether children are at risk of abuse or exploitation in situations outside their families (extra-familial harm).

Staff will also be made aware of the additional safeguarding vulnerabilities of;

- children in the court system;
- children missing education;
- children with family members in prison;
- children who are homeless;
- child who have or have had a social worker;
- children who are young carers;
- children looked after or previously looked after (including those living in kinship care arrangements); and
- children with mental health problems.

9. Recognising and responding to abuse: How to take action

If a member of staff, parent or member of the public is concerned about a pupil's welfare, they should report it to the DSL as soon as possible. On occasions when the DSL is not available, it should be reported to the deputy safeguarding lead/s without delay. If in exceptional circumstances, the DSL (or deputy) is not available, this should not delay appropriate action being taken. Staff should consider speaking to a member of the senior leadership team and/or take advice from local children's social care.

Although any member of staff can make a referral to children's social care, where possible there should be a conversation with the DSL. All staff must follow the procedures set out below in the event of a safeguarding issue.

All staff will be alert to indicators of abuse (including child on child abuse) and will report any of the following to the Designated Safeguarding Lead immediately;

- any concern or suspicion that a child has sustained an injury outside what is reasonably attributable to normal play;
- any concerning behaviours exhibited by children that may indicate that they have been harmed or are at risk of harm, including unusual changes in mood or behaviour, concerning

- use of language and/or concerning drawings or stories;
- any significant changes in attendance or punctuality;
- any significant changes in a child's presentation;
- any indicators that a child may be experiencing child on child abuse;
- any concerns relating to people who may pose a risk of harm to a child; and/or
- any disclosures of abuse that children have made.

More information about our approach to child on child abuse (including sexual violence and sexual harassment) can be found at Appendix A.

The following procedures are in line with statutory guidance (see Section 4) and the Northamptonshire Safeguarding Children Partnership's Threshold Guidance (2023)⁵. Referral procedures can be found in section 9.5.

9.1 If a child discloses that they are suffering or at risk of suffering abuse

If a child discloses that he or she has been abused in some way, the member of staff/volunteer will:

- listen to what is being said without displaying shock or disbelief;
- accept what is being said;
- allow the child to talk freely;
- reassure the child, but do not make promises which it might not be possible to keep;
- never promise a child that they will not tell anyone - as this may ultimately not be in the best interests of the child;
- reassure him or her that what has happened is not his or her fault;
- stress that it was the right thing to tell;
- listen, only asking questions when necessary to clarify;
- not criticise the alleged perpetrator;
- explain what has to be done next and who has to be told;
- make a written record (see Record Keeping); and
- pass the information to the Designated Safeguarding Lead without delay
 - This can be an electronic version or a paper MyConcern that will be scanned onto the electronic system as the original copy. The paper copy should be handed to the school administrator who will then create an electronic entry on staff member's behalf
- **Alternatively, if appropriate, make a referral to children's social care and/or the police directly (see 9.2), and tell the DSL as soon as possible that you have done so.**

All staff will reassure victims that they are being taken seriously and that they will be supported and kept safe. A victim should never be given the impression that they are creating a problem by reporting abuse, sexual violence or sexual harassment, nor should a victim ever be made to feel ashamed for making a report.

Bear in mind that some children may:

- Not feel ready, or know how to tell someone that they are being abused, exploited or neglected
- Not recognise their experiences as harmful
- Feel embarrassed, humiliated or threatened. This could be due to their vulnerability, disability, sexual orientation and/or language barriers

None of this should stop you from having a 'professional curiosity' and speaking to the DSL if you have concerns about a child.

⁵ Thresholds and Pathways - Northamptonshire Safeguarding Children Board

9.2 If a child is suffering or likely to suffer harm, or in immediate danger

If you think that a child is suffering or at risk of suffering significant harm, you must report this to the designated safeguarding lead immediately. On occasions when the designated safeguarding lead is not available, it should be reported to the deputy safeguarding lead without delay or a senior member of staff.

Where possible, there should be a conversation with the Designated Safeguarding Lead but a referral must be made if a child may be suffering or at risk of suffering harm. **Anyone can make a referral to children's social care.** If anyone other than the DSL makes a referral to children's social care or to the police, they should inform the DSL as soon as possible.

9.3 If you have concerns about a child (as opposed to believing a child is suffering or likely to suffer from harm, or is in immediate danger)

Figure 1 on page 19 illustrates the procedure to follow if you have any concerns about a child's welfare. Where possible, speak to the DSL first to agree a course of action (see 9.2).

The DSL will decide on the most appropriate course of action and whether the concerns should be referred to children's social care, using the [Northamptonshire Thresholds Guidance](#)⁷ If it is decided to make a referral to children's social care the parent will be informed, unless to do so would place the child at further risk or undermine the collection of evidence. See Section 6.1 for more details.

All concerns, discussions and decisions will be recorded in writing.

The DSL will provide guidance on the appropriate action. Options will include:

- managing any support for the child internally via the school's own pastoral support processes;
- seeking advice from the local early help co-ordinator/s;
- an Early Help Assessment; or
- a referral for statutory services where the child is or might be in need or suffering or likely to suffer significant harm.

9.4 Early help

All staff should be prepared to identify children who may benefit from early help. Early help is support for children of all ages that improves a family's resilience and outcomes or reduces the chance of a problem getting worse. If early help is appropriate, the DSL will generally lead on liaising with other agencies and setting up an inter-agency assessment as appropriate. Staff may be required to support other agencies and professionals in an early help assessment, in some cases acting as the lead practitioner. Any such cases should be kept under constant review and consideration given to a referral to children's social care for assessment for statutory services if the child's situation does not appear to be improving or is getting worse. Timelines of interventions will be monitored and reviewed.

All staff will be made aware of the early help process, and understand their role in identifying emerging problems, sharing information with other professionals to support early identification and assessment of a child's needs. It is important for children to receive the right help at the right time to address risks and prevent issues escalating. This also includes staff monitoring the situation and feeding back to the Designated Safeguarding Lead any ongoing/escalating concerns so that consideration can be given to a referral to children's social care if the child's situation does not appear to be improving.

We recognise that any child can be the victim of abuse and may benefit from early help. However, we will be particularly vigilant to potential need for early help if a child;

- is disabled or has certain health conditions and has specific additional needs;
- has special educational needs (whether or not they have a statutory Education, Health and Care Plan);

- has a mental health need;
- is a young carer;
- is showing signs of being drawn in to anti-social or criminal behaviour, including gang involvement and association with organised crime groups or county lines;
- is frequently missing/goes missing from education, care or from home;
- is persistently absent from education, including persistent absences for part of the school day.
- has experienced multiple suspensions, is at risk of being permanently excluded from school and in alternative provision or a pupil referral unit.
- is at risk of modern slavery, trafficking, sexual and/or criminal exploitation;
- is at risk of being radicalised or exploited;
- has a parent or carer in custody, or is affected by parental offending;
- is in a family circumstance presenting challenges for the child, such as drug and alcohol misuse, adult mental health issues and domestic abuse;
- is misusing drugs or alcohol themselves;
- **has returned home to their family from care;**
- is in a family circumstance presenting challenges for the child such as drug and alcohol misuse, adult mental health issues and domestic abuse;
- is at risk of so-called 'honour'-based abuse such as Female Genital Mutilation or Forced Marriage;
- is a privately fostered child; and

If it is appropriate to refer the case to local authority children's social care or the police, the DSL will make the referral or support you to do so. If you make a referral directly (see Section 9), you must tell the DSL as soon as possible. Children's social care assessments should consider where children are being harmed in contexts outside the home, so the school will provide as much information as possible as part of the referral process. This will allow any assessment to consider all the available evidence and enable a contextual approach to address such harm.

The local authority will make a decision within **1 working day** of a referral about what course of action to take and will let the person who made the referral know the outcome. The DSL or person who made the referral must follow up with the local authority if this information is not made available, and ensure outcomes are properly recorded.

If the child's situation does not seem to be improving after the referral, the DSL or person who made the referral must follow local escalation procedures to ensure their concerns have been addressed and that the child's situation improves.⁶

The DSL should refer all cases of suspected abuse or neglect to the Multi Agency Safeguarding Hub (MASH), police (cases where a crime may have been committed) and to the Channel programme where there is a radicalisation concern. Safeguarding Referrals must be made in one of the following ways:

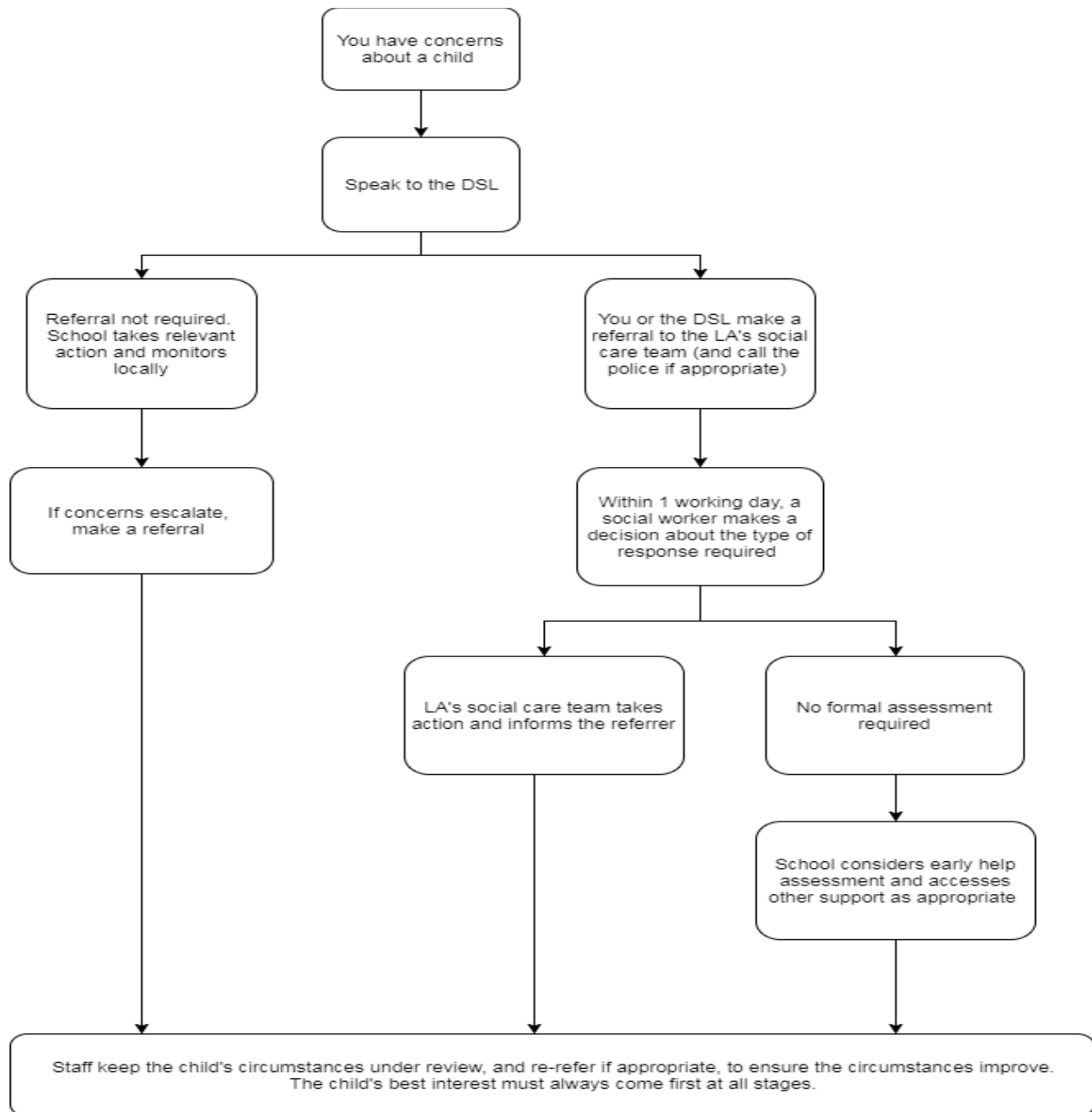
- By telephone contact to the Multi-Agency Safeguarding Hub (MASH): **0300 126 7000** (Option 1).
- By using the online referral form found at: **MASH ONLINE REFERRAL**⁷
- In an emergency outside office hours, contact children's social care out of hours team on 0300 126 7000 or the Police⁸
- If a child is in immediate danger at any time, left alone or missing, you should contact the police directly and/or an ambulance using 999.

⁶ The NSCP Case and Conflict Resolution Protocol can be found here: <http://www.northamptonshirescb.org.uk/schools/case-conflict-resolution-protocol/>

⁷ Mash referral https://northamptonshire-self.achieveservice.com/en/service/Make_a_children_s_referral_to_Northamptonshire_s_MASH#_ga=2.187353770.300324614.1594493492-1170358420.1548097488

⁸ The Designated Safeguarding Lead may make use of the NPCC guidance 'When to call the police'.

9.6 Figure 1: Reporting and responding to concerns flowchart



10. Specific safeguarding issues

For more information relating to specific safeguarding issues, please see Appendix C. For more information about child on child (child on child abuse), please see Appendix B.

10.1 Female Genital Mutilation (FGM)

Any teacher who discovers (either through disclosure by the victim or visual evidence) that an act of FGM appears to have been carried **out on a pupil under 18 must immediately report this to the police, personally. This is a statutory duty, and teachers will face disciplinary sanctions for failing to meet it. Unless they have good reason not to, they should also discuss the case with the DSL and involve children's social care as appropriate.** Any other member of staff who discovers that an act of FGM appears to have been carried out on a pupil under 18 must speak to the DSL and follow our **local safeguarding procedures.**

The duty for teachers mentioned above does not apply in cases where a pupil is *at risk* of FGM or FGM is suspected but is not known to have been carried out. Staff should not examine pupils.

Any member of staff who suspects a pupil is *at risk* of FGM or suspects that FGM has been carried out must speak to the DSL and follow our local safeguarding procedures.

The Headteacher & member of staff will report the evidence to the police and the Headteacher will make a MASH referral.

10.2 Radicalisation and extremism

All schools are subject to a duty under section 26 of the Counter-Terrorism and Security Act 2015 in the exercise of their functions to have “due regard” to the need to prevent people from being drawn into terrorism. In the event that concerns are raised relating to radicalisation and extremism, the DSL should be informed immediately.

We adhere to the Prevent Duty statutory guidance (2023).

10.3 Children potentially at greater risk of harm

At Croyland Primary School it is recognised that some children need a social worker due to abuse, neglect, exploitation or family circumstances and that abuse and trauma can leave children vulnerable to further harm, as well as educational disadvantage.

The DSL will hold information relating to social workers working with children at the school/college. This information will inform decisions about safeguarding and promoting welfare (including the provision of pastoral and/or academic support).

We will also take action to promote the educational outcomes of and to protect;

- Children missing education;
- Children missing from home or care.

There are other familial issues that can have a detrimental impact on children. We work with other agencies in line with Keeping Children Safe in Education (2024) to support children and families in the following circumstances:

- Children facing the court procedures and/or children in the court system.
- Children with family members in prison.
- Children who are homeless.
- Children who need a social worker.

10.4 Mental health

Mental health problems can, in some cases, be an indicator that a child has suffered or is at risk of suffering abuse, neglect or exploitation.

Staff will be alert to behavioural signs that suggest a child may be experiencing a mental health problem or be at risk of developing one. Where children have suffered abuse, neglect and exploitation, or other potentially traumatic adverse childhood experiences, this can have a lasting impact throughout childhood, adolescence and into adulthood. It is key that staff are aware of how these children’s experiences, can impact on their mental health, behaviour and education.

At Croyland Primary School, we have a team of staff who provide children with time to talk and appropriate intervention. Any staff member is able to refer a child through Chris Baillie. All interventions are discussed monthly by the team. Where children have suffered abuse and neglect, or other potentially traumatic adverse childhood experiences, this can have a lasting impact throughout childhood, adolescence and into adulthood. It is key that staff are aware of how these children's experiences, can impact on their mental health, behaviour and education.

If staff have a mental health concern about a child we will respond to the concern, inform and discuss our concerns with parents/carers and seek ways to support the child in and out of school.

If you have a mental health concern about a child that is also a safeguarding concern, take immediate action by following the steps in Section 9.

If you have a mental health concern that is not also a safeguarding concern, speak to the DSL to agree a course of action.

Only appropriately trained professionals should attempt to make a diagnosis of a mental health concern. However, Croyland Primary School will provide information and signposting services to children and parents through the referral management centre and assist with the teaching of emotional health and wellbeing to children in our curriculum

Refer to the Department for Education guidance on [mental health and behaviour in schools](#)⁹ for more information.

10.5 Child on child abuse

The school takes all reports and concerns about child on child abuse, including child on child sexual violence and harassment, very seriously. This includes any reports or concerns that have occurred outside of the school premises, or online.

Our strategy to address child on child abuse is detailed in The Promotion of Positive Behaviour Policy. Full details of how the school prevents and responds to and supports the victims of child on child abuse can be found in the policy.

10.6 Online safety

Our Safe Use of Online Technology Policy is set out in a separate document and more information can be found in Appendix F of this policy. We ensure that we have effective mechanisms to identify, intervene in, and escalate any incident where appropriate. Online safety is included in our curriculum at all levels and information is also provided to parents/carers.

All staff are made aware of the Safe Use of Online Technology Policy which sets our expectations relating to:

- creating a safer online environment – including training requirements, filters and monitoring;
- giving everyone the skills, knowledge and understanding to help children and young people stay safe on-line;
- inspiring safe and responsible use and behaviour;
- safe use of mobile phones both within school and on school trips/outings;
- safe use of camera equipment, including camera phones; and
- what steps to take if you have concerns and where to go for further help.

⁹ <https://www.gov.uk/government/publications/mental-health-and-behaviour-in-schools--2>

Staff must read the **Safe Use of Online Technology Policy** in conjunction with our Staff Code of Conduct and Essential Information in relation to personal online behaviour.

Pupil mobile phones

Pupils are not permitted to use mobile phones at school during the school day. Should a child bring in a mobile phone, it is signed in to the class teacher at the beginning of the day and collected at the end of the day.

10.7 Children who are gay, lesbian, bisexual or gender questioning

We recognise the fact that a child being gay, lesbian or bisexual is not in itself an inherent risk factor for harm. However, we understand that children these children can be targeted by other children. In some cases, a child who is perceived by other children to be gay, lesbian or bisexual (whether they are or not) can be just as vulnerable as children who identify as LGB.

We will:

- Create a culture where these children are able to speak out and share their concerns;
- Support and safeguard children in line with guidance and legislation.

11. Pupils with special educational needs and disabilities (SEND)

We recognise that pupils with special educational needs (SEN) and disabilities can face additional safeguarding challenges. Additional barriers can exist when recognising abuse, neglect and exploitation in this group, including;

- assumptions that indicators of possible abuse such as behaviour, mood and injury relate to the child's disability without further exploration;
- pupils being more prone to peer group isolation than other pupils;
- the potential for pupils with SEN and disabilities being disproportionately impacted by behaviours such as bullying, without outwardly showing any signs; and/or
- communication barriers and difficulties in overcoming these barriers.

We offer extra pastoral support for pupils with SEN and disabilities within our pastoral team based on an in school referral

More information can be found about local support for children with SEND here:

- **[Directory of Services for Children with Disabilities: Specialist support for SEND](https://www.northamptonshire.gov.uk/councilservices/children-families-education/SEND/specialist-support-for-send/Pages/default.aspx)**¹⁰
- **[Northamptonshire's Local Offer: SEND Local Offer](https://www.northamptonshire.gov.uk/councilservices/children-families-education/SEND/local-offer)**¹¹

12. Pupils with a social worker and those that have previously needed a social worker

¹⁰ <https://www.northamptonshire.gov.uk/councilservices/children-families-education/SEND/specialist-support-for-send/Pages/default.aspx>

¹¹ <https://www.northamptonshire.gov.uk/councilservices/children-families-education/SEND/local-offer>

Pupils may need a social worker due to safeguarding or welfare needs. We recognise that a child's experiences of adversity and trauma can leave them vulnerable to further harm as well as potentially creating barriers to attendance, learning, behaviour and mental health. We work with the local authority to ensure that we are providing effective support for this group of children.

13. Looked after and previously looked after children

The role of virtual school head now includes a non-statutory responsibility for oversight of the attendance, attainment and progress of children with a social worker and children in kinship care.

We will ensure that staff have the skills, knowledge and understanding to keep looked-after children and previously looked-after children safe. In particular, we will ensure that:

Appropriate staff have relevant information about children's looked after legal status, contact arrangements with birth parents or those with parental responsibility, and care arrangements. The DSL has details of children's social workers and relevant virtual school heads.

- We have appointed a designated teacher, Mrs Lisa Carroll, who is responsible for promoting the educational achievement of looked-after children and previously looked-after children in line with [statutory guidance](#).¹²
- The designated teacher is appropriately trained and has the relevant qualifications and experience to perform the role.

As part of their role, the designated teacher will:

- Work closely with the DSL to ensure that any safeguarding concerns regarding looked-after and previously looked-after children are quickly and effectively responded to.
- Work with virtual school heads to promote the educational achievement of looked-after and previously looked-after children, including discussing how pupil premium plus funding can be best used to support looked-after children and meet the needs identified in their personal education plans.

14. Record-keeping

All safeguarding concerns, discussions and decisions made and the reasons for those decisions must be recorded in writing on paper or MyConcern. This includes instances where referrals were or were not made to another agency. If in doubt about recording requirements staff should discuss this with the DSL.

When a child has made a disclosure, the member of staff/volunteer should;

- record as soon as possible after the conversation. If the concern is recorded on **paper, this must be handed in to the school office immediately so that the concern can be added & scanned to the electronic system, MyConcern.**
- **not destroy the original notes in case they are needed by a court;**
- **record the date, time, place and any noticeable non-verbal behaviour and the words used by the child;**
- **draw a diagram to indicate the position of any injuries if relevant; and**
- **record statements and observations rather than interpretations or assumptions**

¹² <https://www.gov.uk/government/publications/designated-teacher-for-looked-after-children>

All records need to be given to the DSL promptly. No copies should be retained by the member of staff or volunteer.

The Designated Safeguarding Lead will ensure that all safeguarding records are managed in accordance with the Education (Pupil Information) (England) Regulations 2005. All concerns, discussions and decisions made, and the reasons for those decisions, should be recorded in writing. Information should be kept confidential and stored securely.

Records will include:

- a clear and comprehensive summary of the concern;
- details of how the concern was followed up and resolved; and
- a note of any action taken, decisions reached and the outcome.

Non-confidential records will be easily accessible and available. Confidential information and records will be held securely and only available to those who have a right or professional need to see them. We will hold records in line with our records retention schedule.

If a child for whom the school has, or has had, safeguarding concerns moves to another school, the DSL will ensure that their child protection file is forwarded promptly and securely, and separately from the main pupil file.

To allow the new school/college to have support in place when the child arrives, this should be within:
5 days for an in-year transfer, or within
The first 5 days of the start of a new term

In addition, if the concerns are significant or complex, and/or social services are involved, the DSL will speak to the DSL of the receiving school and provide information to enable them to have time to make any necessary preparations to ensure the safety of the child.

Appendix D sets out our policy on record-keeping specifically with respect to recruitment and pre-employment checks. Appendix E sets out our policy on record-keeping with respect to allegations of abuse made against staff.

15. Relationships, sex and health education (RSHE)

Promoting safeguarding and welfare in the curriculum

RHSE Relationship, Sex and Health Education is compulsory. As a school we have developed our approaches to meet statutory requirements and the teaching of this. This will include equality, diversity and difference. [Please refer to our RHE policy.](#)

We acknowledge that there may be times during the teaching of RSHE, that children may need an opportunity to talk to a trusted adult in the school. Children may want to talk about experiences at home or in the community that may trigger discussions with the Designated Lead, who will then decide on any next steps around listening and responding to the child.

We will maintain an attitude of “it could happen here” where safeguarding is concerned.

The school plays a crucial role in preventative education. This is in the context of a whole-school approach to preparing pupils for life in modern Britain, and a culture of zero tolerance of sexism,

misogyny/misandry, homophobia, biphobia and sexual violence/harassment. This will be underpinned by our:

- The Promotion of Positive Behaviour policy
- Pastoral support system
- Planned programme of relationships, sex and health education (RSHE), which is inclusive and delivered regularly, tackling issues such as:
 - I. Healthy and respectful relationships
 - II. Boundaries and consent
 - III. Stereotyping, prejudice and equality
 - IV. Body confidence and self-esteem
 - V. How to recognise an abusive relationship (including coercive and controlling behaviour)
 - VI. The concepts of, and laws relating to, sexual consent, sexual exploitation, abuse, grooming, coercion, harassment, rape, domestic abuse, so-called honour-based violence such as forced marriage and female genital mutilation (FGM) and how to access support
 - VII. What constitutes sexual harassment and sexual violence and why they're always unacceptable

16. Safer working practice

We work to create and embed a culture of openness, trust and transparency, in which Croyland Primary School's values and expected behaviour (as set out in the staff code of conduct) are constantly lived, monitored and reinforced by all staff.

We expect all staff to act with professionalism at all times. To reduce the risk of unsafe or harmful practice, all staff should receive training on safer working practice and should be familiar with the guidance contained in the staff handbook and school code of conduct and Safer Recruitment Consortium document **Guidance for safer working practice for those working with children and young people in education settings (February 2022)**.¹³

Governors/proprietors and senior leaders will support and ensure that this policy is adhered to by:

- ensuring staff are clear about what appropriate behaviour is, and are confident in distinguishing expected and appropriate behaviour from concerning, problematic or inappropriate behaviour, in themselves and others through effective training;
- empowering staff to share any low-level safeguarding concerns;
- addressing unprofessional behaviour and supporting the individual to correct it at an early stage; and
- providing a responsive, sensitive and proportionate handling of such concerns when they are raised.

Governors/proprietors will help to identify any weakness in the school's safeguarding system.

Staff are expected to adhere to the staff Code of Conduct and Guidance for safer working practice for those working with children in education settings at all times. In the event of any concerns or allegations, the school will deal with them promptly, in line with local guidance and KCSIE (2024).

16.1 Staff use of mobile phones

Staff are allowed to bring their personal phones to school for their own use, but will limit such use to non-contact time when pupils are not present. Staff members' personal phones will remain in their

¹³ <https://www.saferrecruitmentconsortium.org/>

bags or cupboards during contact time with pupils. Staff will not take pictures or recordings of pupils on their personal phones or cameras. Staff members with a smart watch are asked and reminded to keep notifications switched off during the working day.

We will follow the General Data Protection Regulation and Data Protection Act 2018 when taking and storing photos and recordings for use in the school.

For more information, please refer to our Staff Code of Conduct.

17. Safeguarding concerns about and allegations against members of staff

17.1 Allegations that may meet the harms threshold

In the event that there is an allegation of abuse against a member of staff, we will adhere to Part 4, Section 1 of KCSIE (2024) and Northamptonshire Safeguarding Children Partnership guidance. See Appendix D for more details.

Allegations that may indicate that a person would pose a risk of harm if they continue to work in their present position or in any capacity with children in a school or college include:

- staff having behaved in a way that has harmed a child, or may have harmed a child;
- staff possibly committing a criminal offence against or related to a child;
- staff behaving towards a child or children in a way that indicates they may not be suitable to work with children; and/or
- staff behaving or possibly behaving in a way that indicates they may not be suitable to work with children.

This includes behaviour or incidents that have occurred both in school and outside of school.

Please refer to our Whistleblowing policy.

Allegations against the Headteacher

If an allegation is made against the Headteacher, it must be reported to Tracy Elliott (Chair of Governors) email: telliott@croylandprimary.org.uk

Allegations against staff

If a concern or allegation of abuse arises against any member of staff, supply teacher or volunteer other than the Headteacher, it must be reported to the Headteacher without delay. This includes supply staff, volunteers and anyone working in or on behalf of the school, whether paid or unpaid. Allegations of abuse against staff must be reported to the Headteacher or Chair of Governors as appropriate and not discussed directly with the person involved.

The Headteacher or Chair of Governors should consider if the concern or allegation meets the threshold for Designated Officer intervention.

Allegations against staff relating to a position of trust issue will be referred to the Local Authority designated officer within 24 hours. If a child has suffered or may have suffered abuse or harm, a MASH referral will also be made and the police will be contacted if necessary.

A referral to the Disclosure and Barring Service will be made if a member of staff is dismissed or removed from their post as a result of safeguarding concerns, or would have been removed if they had not have resigned.

17.2 Safeguarding concerns that do not meet the harm threshold (low level concerns)

In the event that there is a safeguarding concern about a member of staff, we will adhere to guidance outlined in Part 4, Section 2 of KCSIE (2024) and Northamptonshire Safeguarding Children Partnership guidance.

The term 'low-level' concern does not mean that it is insignificant, it means that the behaviour towards a child does not meet the harms threshold. A low-level concern is any concern – no matter how small, and even if no more than causing a sense of unease or a 'nagging doubt' - that an adult working in or on behalf of the school or college may have acted in a way that:

- is inconsistent with the staff code of conduct, including inappropriate conduct outside of work; and
- does not meet the allegations threshold or is otherwise not considered serious enough to consider a referral to the LADO.

It is essential that low level concerns are reported. Such behaviours can exist on a wide spectrum, from the inadvertent or thoughtless, or behaviour that may look to be inappropriate, but might not be in specific circumstances, through to that which is ultimately intended to enable abuse.

Examples of such behaviour could include, but are not limited to:

Being overly friendly with children

Having favourites

Taking photographs of children on their mobile phone

Engaging with a child on a one-to-one basis in a secluded area or behind a closed door

Humiliating pupils

We will act quickly, proportionately and appropriately in the event of a low level concern, to prevent abuse or harm of a child and to promote a culture of safeguarding. Dealing with low level concerns also protects those working in or on behalf of schools and colleges from potential false allegations or misunderstandings.

Staff will receive training about what may constitute a low-level concern. More information can be found in Part 4 of KCSIE (2024).

Reporting low level concerns

Low level concerns should be reported to the Headteacher.

All low-level concerns should be recorded in writing. The record should include details of the concern, the context in which the concern arose, and action taken. The name of the individual sharing their concerns should also be noted, if the individual wishes to remain anonymous then that should be respected as far as reasonably possible. These records will be kept in a confidential document secured in the staff member's personnel file and retained in line with our data retainment policy.

The Headteacher may:

- Speak directly to the person who raised the concern (unless it has been raised anonymously).
- Speak to the individual involved and/or witnesses.

The Headteacher will then categorise the type of behaviour and decide on an appropriate course of action. This will be recorded, along with rationale for any decisions made and details of action taken.

Records will be reviewed so that potential patterns of concerning, problematic or inappropriate behaviour can be identified. In the event that patterns and/or wider cultural issues within the school are identified, the school will either:

- take action through our disciplinary procedures;
- refer behaviour to the local authority designated officer/s where a pattern of behaviour moves from a concern to meeting the harms threshold; and/or
- revise policies or implement extra training as appropriate, to minimise the risk of behaviour happening again.

We will retain low level concerns information for a period of at least until the person is no longer employed by the school.

17.3 Supply staff

Although the school does not directly employ supply teachers, we will ensure that any concerns or allegations against supply teachers are handled properly. We will never cease to use a supply teacher for safeguarding reasons without finding out the facts and liaising with the Local Authority Designated Officer to reach a suitable outcome.

Governing bodies/proprietors will liaise with the supply agency to determine whether to suspend or redeploy the supply teacher whilst they carry out their investigation.

The school will inform supply agencies of its process for managing allegations and will take account of the agency's policies and their duty to refer to the DBS as personnel suppliers. Informing supply agencies of our process for managing allegations includes inviting the agency's human resource manager (or equivalent) to meetings and regularly updating agencies on relevant school policies.

18. Complaints and concerns about school safeguarding policies

18.1 Complaints against staff

Complaints against staff that are likely to require a child protection investigation will be handled in accordance with our procedures for dealing with low level concerns or allegations of abuse made against staff (see Section 17).

18.2 Other complaints

The Senior Leadership Team handles any complaint relating to the pupils or premises and a written response is returned to the complainant. The response names the Chair of Governors for further contact in the event that the complainant does not feel the complaint has been handled effectively. The Chair of Governors is made aware each time there is a complaint.

18.3 Whistle-blowing

Whistleblowing is the term used when someone who works for an employer raises a concern about malpractice, risk (for example about pupil safety), wrongdoing or possible illegality, which harms, or creates a risk of harm, to other people such as: pupils, colleagues or the wider public. Individuals are encouraged to raise their concerns at the earliest opportunity. The earlier concerns are expressed, the easier it is to take action and the more effective that action is likely to be. Our Whistleblowing Policy can be found on the school website.

19. Policy implementation, monitoring and review

The policy will be reviewed annually by the governing body. It will be implemented through the school's induction and training programme, and as part of day to day practice. Compliance with the policy will be monitored by the Designated Safeguarding Lead and through staff performance measures

Child on child abuse is any abuse of a child or children that is perpetrated by another child or children. This includes all forms of sexual harassment, sexual violence and abuse. We strive to create a culture of safety, where children are free from harassment or abuse of any kind. We take a zero-tolerance approach to sexual violence and sexual harassment – it is never acceptable and it will not be tolerated.

We know that even if we do not receive any reports relating to child on child abuse, it does not mean that it is not happening. We support and encourage anyone – especially our pupils – to come forward to share any concerns about child on child abuse so that we can take action to keep all children safe.

Child on child abuse is most likely to include, but may not be limited to:

- bullying (including cyberbullying, prejudice-based and discriminatory bullying);
- abuse in intimate personal relationships between children (sometimes known as 'teenage relationship abuse');
- physical abuse such as hitting, kicking, shaking, biting, hair pulling, or otherwise causing physical harm (this may include an online element which facilitates, threatens and/or encourages physical abuse);
- sexual violence, such as rape, assault by penetration and sexual assault (this may include an online element which facilitates, threatens and/or encourages sexual violence);
- sexual harassment, such as sexual comments, remarks, jokes and online sexual harassment, which may be standalone or part of a broader pattern of abuse;
- causing someone to engage in sexual activity without consent, such as forcing someone to strip, touch themselves sexually, or to engage in sexual activity with a third party;
- consensual and non-consensual sharing of nudes and semi nude images and or videos (also known as sexting or youth produced sexual imagery);
- upskirting, which typically involves taking a picture under a person's clothing without their permission, with the intention of viewing their genitals or buttocks to obtain sexual gratification, or cause the victim humiliation, distress or alarm; and
- initiation/hazing type violence and rituals (this could include activities involving harassment, abuse or humiliation used as a way of initiating a person into a group and may also include an online element).¹⁴

All children are capable of abusing their peers and we recognise that girls are more likely to be the victims of child on child abuse and boys' perpetrators. All child on child abuse is unacceptable and will be taken seriously.

Staff training

All staff are made aware that children can abuse other children that this can happen online or in person, at school or outside of school. All staff will receive training so that they can confidently recognise the indicators and signs of child on child abuse in order to identify it and respond appropriately to reports. All staff will be made aware of the school's policy and procedures with regards to child on child abuse and the crucial role that they play in preventing it and responding to it as necessary. It will be made clear that addressing inappropriate behaviour (even if it appears to be

¹⁴ Keeping Children Safe in Education (2024)

relatively innocuous) can be an important intervention that helps prevent problematic, abusive and/or violent behaviour in the future.

Appendix A: Child on child abuse

Procedures for minimising opportunities for child on child abuse

Croyland Primary School recognises that a crucial part of our safeguarding responsibility is to minimise the opportunity for child on child abuse to occur. In order to do this, and to establish a safe environment for all children, we:

- have robust systems in place included in The Promotion of Positive Behaviour Policy, which makes it clear that we have a zero tolerance approach to any kind of child on child abuse;
- ensure staff understand what is meant by child on child abuse and the school policy on child on child abuse by providing annual training and updates throughout the year;
- train staff thoroughly so that they challenge inappropriate behaviour (even if it appears to be relatively innocuous);
- train staff thoroughly so that they are confident to challenge inappropriate behaviours between peers, that are actually abusive in nature;
- never downplay certain behaviours, for example dismissing sexual harassment as “just banter”, “just having a laugh”, “part of growing up” or “boys being boys”, as this can lead to a culture of unacceptable behaviours, an unsafe environment for children and in worst case scenarios a culture that normalises abuse leading to children accepting it as normal and not coming forward to report it; and
- recognise that sexual harassment and sexual violence, as well as other forms of child on child abuse, may be happening even if they are not reported.
- At two points throughout the year, children are asked to complete a safety questionnaire to identify other pupils and places that make them feel unsafe.

How we address child on child abuse within the curriculum and across the school

The topics covered in year groups are as below:

Teaching Topics	Year 1	Year 2	Year 3	Year 4	Year 5	Year 6
Healthy and safe relationships		/	/	/	/	/
Consent			/	/	/	/
Internet safety	/	/	/	/	/	/
Peer pressure	/	/	/	/	/	/
Bullying		/	/	/	/	/

Stranger Danger	/	/				/
Alcohol, drugs and substance misuse		/		/		/
Safe touching	/		/		/	
Sexual exploitation and abuse			/	/	/	/
Staying safe from harm		/	/	/	/	/
Emotional wellbeing and mental health	/	/	/	/	/	/
Gangs and knife crime			/		/	/
Radicalisation						/

We ensure that our systems for reporting all safeguarding concerns are well promoted, easily understood and easily accessible for children to confidently report abuse, knowing their concerns will be treated seriously. We ensure that children are aware of our safeguarding and child protection procedures, including how to raise concerns about child on child abuse. Specific issues are dealt with as a year group or on an individual basis.

Additional Vulnerabilities

We recognise that some children may be more vulnerable to child on child abuse than others. For example, children who have already experienced abuse, those that have special educational needs or disabilities (SEND), children living in care and children who are LGBTQ+, may be more likely to face child on child abuse than other children. We recognise that girls are more likely to be the victims of child on child abuse than boys. Some children may face additional barriers to telling anyone about abuse because of their vulnerability, disability, sex, ethnicity and/or sexual orientation. We work to protect children with additional vulnerabilities by following the procedures above.

How to report concerns

Our pupils

If a young person witnesses or experiences any form of child on child abuse, we strongly encourage them to speak to a trusted member of staff, parent or trusted adult about it. If a child discloses to an adult outside of school, the adult should contact the Designated Safeguarding Lead without delay to report the issue.

All victims will be taken seriously, regardless of how long it has taken them to come forward and they will be supported and kept safe. Abuse that occurs online or outside of the school will be treated equally seriously. A victim will never be given the impression that they are creating a problem by reporting child on child abuse, including sexual violence or sexual harassment. A victim will never be made to feel ashamed for making a report or have their experience minimised.

In school, pupils can:

- Can speak to their teacher, TA, or any adult around the school that they feel comfortable talking to;
- Can speak to Chris Baillie or leave a message in her worry/sharing box;
- Can leave a message in the class worry/sharing box;
- Can speak to the Online Safety Lead about online abuse

All of these methods can be used to report any form of harm or abuse, or can be used by pupils to share worries or concerns about any issue, including child on child abuse.

In the event that a pupil reports or discloses child on child abuse, we will take their report seriously, take prompt action to respond and to safeguard the child or children involved and we will ensure that we are listening to the voice of the child when deciding on the best course of action to take. We will always act in the best interests of children. Following any disclosures or reports of child on child abuse, we will review our school systems, training and policies to determine if any learning can be derived from the situation to further strengthen our approach to this issue. We will always encourage our pupils to safely express their views and give feedback on how they have been supported following a safeguarding concern.

Our staff

Any member of staff that has concerns about child on child abuse should follow the procedure set out in Section 9 and must report concerns immediately.

Others

We encourage everyone to report any form of abuse or harm perpetrated by or against our pupils. Any concerns should be reported to the Designated Safeguarding Lead, using the details on the front page of this policy.

Wider concerns

We strive to create a safe and welcoming environment for all children. If you have any concerns about our culture of safeguarding, policy or procedures, please direct these to the safeguarding lead immediately, or follow our school Complaints Policy.

What happens when an allegation of child on child abuse is made?

We will adhere to Keeping Children Safe in Education (2024) and the DfE guidance document 'Sexual violence and sexual harassment between children in schools and colleges' (where applicable) when responding to incidents of child on child abuse. The school takes child on child abuse seriously and will respond to all concerns or disclosures of child on child abuse, including those that have occurred outside of school and online, immediately.

Upon receiving a concern, report or disclosure of abuse, the Designated Safeguarding Lead will decide what further action is necessary.

Our starting point regarding any report of child on child sexual harassment or violence should always be that there is a zero tolerance approach, it is never acceptable and it will not be tolerated. It is especially important not to pass off any sexual violence or sexual harassment as "banter", "just having

a laugh”, “part of growing up” or “boys being boys” as this can lead to a culture of unacceptable behaviours and an unsafe environment for children.

The subsequent action taken will vary depending on the type of child on child abuse and the severity of the incident/s disclosed. The Designated Safeguarding Lead will take contextual factors into account when managing the report.

The Designated Safeguarding Lead will always consider the following;

- the wishes of the victim in terms of how they want to proceed. The victims will be given as much control as is reasonably possible over decisions regarding how any investigation will be progressed and any support that they will be offered;
- the nature of the alleged incident(s), including: the level of coercion or threat, whether a crime may have been committed and consideration of harmful sexual behaviour;
- both the chronological ages and developmental stages of the children involved;
- any power imbalance between the children, including consideration of the age of children and whether children have special educational needs or disabilities;
- the impact on the victim;
- if the alleged incident is a one-off or a sustained pattern of abuse;
- if there are ongoing risks to the victim, other children, adult students or school or college staff; and
- Other related issues and wider context, such as links to child criminal or child sexual exploitation.

Depending on the nature of the incident/s, the Designated Safeguarding Lead may

- Seek further information from those involved and witnesses.
- Undertake a risk assessment and needs assessment to ascertain steps necessary to safeguard the victim, alleged perpetrator, adults and other children.
- Decide to manage the concern internally.
- Organise a meeting with relevant staff and agencies to assess risk and agree a safety plan.
- Refer the victim and/or the perpetrator to local services for Early Help.
- Refer the case to Children’s Services via a MASH referral.
- Liaise with social workers working with children involved (if applicable).
- Make a report to the police.
- Liaise with specialist services.

In the event of a disclosure of child on child sexual violence, we will make an immediate risk and needs assessment. The risk and needs assessment will consider:

- the victim, especially their protection and support (this includes their journey to and from school)
- whether there may have been other victims,
- the alleged perpetrator(s); and
- all the other children, (and, if appropriate, adult students and staff) at the school or college, especially any actions that are appropriate to protect them from the alleged perpetrator(s), or from future harms.

More information about these options in relation to sexual violence and sexual harassment can be found in Part 5 of KCSIE (2024).

Recording procedures

Any child-on-child abuse is noted as a serious behaviour and is indicated, for the children, as a grey behaviour incident on our behaviour record form.

All behaviour record forms are loaded onto our school MIS system and kept on the child’s record. To complete the form, parents must be alerted to the incident and sanctions concluded. Forms are

reviewed monthly to identify patterns in behaviours. In some cases, pastoral or behavioural interventions are recommended.

Depending on the nature of the incident, a risk assessment or BSP may be put in place making clear expected behaviour and strategies to ensure this and protect the victim.

All behaviours are analysed termly and reported to the PAW Governor Committee.

How we support victims of child on child abuse

The school recognises that child on child abuse has a significant impact on children and victims are likely to need ongoing support. Children who are victims of sexual violence and sexual harassment wherever it happens, will likely find the experience stressful and distressing. Appropriate support will be put in place for victims of child on child abuse whilst investigation is taking place and following the initial response. Support will continue for as long as it is needed and will be reviewed regularly to ensure the victim is receiving appropriate care. The school will do everything we can to maintain the victim's normal routine. We will do everything we can to protect the victim from further bullying, harassment or abuse as a result of their disclosure.

The pastoral team will prioritise the child rather than adding them to a waitlist.

If a victim of child on child abuse moves to a new setting, the Designated Safeguarding Lead will share the necessary information to ensure that support for the child continues.

How we will support alleged perpetrators and perpetrators of child on child abuse

We have a responsibility to safeguard and support all children. We will adhere to KCSIE (2024) when managing reports of child on child abuse and decide on action and support on a case by case basis.

The school has a responsibility to ensure that an alleged perpetrator continues to receive a suitable education and will consider a range of options in continuing educational provision if they are unable to attend school. Options may include

- Working away from the other child/children
- Alternating playtimes
- Staggered arrival/departure times from school accompanied by an adult
- Recommend lunch off site

We recognise that children who perpetrate child on child abuse may be being abused themselves. The school will continue to safeguard the alleged perpetrator and provide them with support.

A plan to reduce the risk posed by the alleged perpetrator will be put in place as part of the risk assessment made following the alleged abuse. The Designated Safeguarding Lead will take advice from children's social care, specialist services and the police as necessary.

The school may choose to impose a sanction or punishment on the alleged perpetrator following an incident of child on child abuse. In this case, we will follow the school's Promotion of Positive Behaviour Policy in determining the level and severity of sanction.

Where a child is cautioned or receives a conviction related to an incident of child on child abuse, the school will work with their parent/carers to ensure their education continues while preventing further incidents.

If the alleged perpetrator moves to another setting, the Designated Safeguarding Lead will share information as necessary to safeguard the individual and other children at the new setting.

If the incident is a criminal offence and there are delays in the criminal process, the DSL will work closely with the police (and other agencies as required) while protecting children and/or taking any

disciplinary measures against the alleged perpetrator. We will ask the police if we have any questions about the investigation.

How we will support other children who may have been affected by child on child abuse

Our pastoral team will provide support as appropriate.

Local Safeguarding Arrangements and making referrals

The school adheres to local safeguarding arrangements, as outlined by the Northamptonshire Safeguarding Children Partnership.

For further details of how the school works with partner agencies in responding to safeguarding incidents (including incidents of child on child abuse), please see the main body of this policy.

Parents

Parents will be informed of incidents unless sharing information puts a child at greater risk of harm.

Appendix B: Types of abuse

Children will always be encouraged to speak to parents about child on child abuse unless it puts them at greater risk of harm.

Whole school response

We will keep detailed records of any incidents of child on child abuse and will look out for potential patterns of concerning, problematic or inappropriate behaviour. Where a pattern is identified, we will take appropriate action. Consideration will be given to whether there are wider cultural issues that enabled the inappropriate behaviour to occur and in order to minimise it happening again, we may:

- Dedicate more teaching time to a particular issue or topic;
- Deliver additional staff training
- Create a team around the child/family
- Seek support from external agencies who are able to connect with the child/family, eg. Voice.

Abuse, including neglect, and safeguarding issues are rarely standalone events that can be covered by one definition or label. In most cases, multiple issues will overlap.

Physical abuse may involve hitting, shaking, throwing, poisoning, burning or scalding, drowning, suffocating or otherwise causing physical harm to a child. Physical harm may also be caused when a parent or carer fabricates the symptoms of, or deliberately induces, illness in a child.

Emotional abuse is the persistent emotional maltreatment of a child such as to cause severe and adverse effects on the child's emotional development. Some level of emotional abuse is involved in all types of maltreatment of a child, although it may occur alone.

Emotional abuse may involve:

- Conveying to a child that they are worthless or unloved, inadequate, or valued only insofar as they meet the needs of another person
- Not giving the child opportunities to express their views, deliberately silencing them or 'making fun' of what they say or how they communicate
- Age or developmentally inappropriate expectations being imposed on children. These may include interactions that are beyond a child's developmental capability, as well as overprotection and limitation of exploration and learning, or preventing the child participating in normal social interaction
- Seeing or hearing the ill-treatment of another
- Serious bullying (including cyberbullying), causing children frequently to feel frightened or in danger, or the exploitation or corruption of children

Sexual abuse involves forcing or enticing a child or young person to take part in sexual activities, not necessarily involving a high level of violence, whether or not the child is aware of what is happening.

The activities may involve:

- Physical contact, including assault by penetration (for example rape or oral sex) or non-penetrative acts such as masturbation, kissing, rubbing and touching outside of clothing
- Non-contact activities, such as involving children in looking at, or in the production of, sexual images, watching sexual activities, encouraging children to behave in sexually inappropriate ways, or grooming a child in preparation for abuse (including via the internet)

Sexual abuse is not solely perpetrated by adult males. Women can also commit acts of sexual abuse, as can other children.

Neglect is the persistent failure to meet a child's basic physical and/or psychological needs, likely to result in the serious impairment of the child's health or development. Neglect may occur during pregnancy as a result of maternal substance abuse.

Once a child is born, neglect may involve a parent or carer failing to:

- Provide adequate food, clothing and shelter (including exclusion from home or abandonment)
- Protect a child from physical and emotional harm or danger
- Ensure adequate supervision (including the use of inadequate care-givers)
- Ensure access to appropriate medical care or treatment
- Provide a suitable education

It may also include neglect of, or unresponsiveness to, a child's basic emotional needs.

Children missing from education

A child going missing from education, particularly repeatedly, can be a warning sign of a range of safeguarding issues. This might include abuse or neglect, such as sexual abuse or exploitation or child criminal exploitation, or issues such as mental health problems, substance abuse, radicalisation, FGM or forced marriage.

There are many circumstances where a child may become missing from education, but some children are particularly at risk. These include children who:

- Are at risk of harm or neglect
- Are at risk of forced marriage or FGM
- Come from Gypsy, Roma, or Traveller families
- Come from the families of service personnel
- Go missing or run away from home or care
- Are supervised by the youth justice system
- Cease to attend a school
- Come from new migrant families

We will follow our procedures for unauthorised absence and for dealing with children who go missing from education, particularly on repeat occasions, to help identify the risk of abuse, neglect and exploitation, including sexual exploitation, and to help prevent the risks of going missing in future. This includes when problems are first emerging but also where children are already known to local authority children's social care and need a social worker (such as a child who is a child in need or who has a child protection plan, or is a looked after child), where being absent from education may increase known safeguarding risks within the family or in the community

We will always follow up with parents/carers when pupils are not at school. This means we need to have at least two, up to date, contacts for parents/carers. Parents/carers should remember to update the school as soon as possible where these contact details change.

We will always follow up with parents/carers when pupils are not at school. This means we need to have at least two, up to date, contacts for parents/carers. Parents/carers should remember to update the school as soon as possible where these contact details change. This includes informing the local authority if a child leaves the school without a new school being named, and adhering to requirements with respect to sharing information with the local authority, when applicable, when removing a child's name from the admission register at non-standard transition points.

Staff will be trained in signs to look out for and the individual triggers to be aware of when considering the risks of potential safeguarding concerns which may be related to being missing, such as travelling to conflict zones, FGM and forced marriage.

If a staff member suspects that a child is suffering from harm or neglect, we will follow local child protection procedures, including with respect to making reasonable enquiries. We will make an immediate referral to the local authority children's social care team, and the police, if the child is suffering or likely to suffer from harm, or in immediate danger.

Child criminal exploitation

Child criminal exploitation (CCE) is a form of abuse where an individual or group takes advantage of an imbalance of power to coerce, control, manipulate or deceive a child into criminal activity, in exchange for something the victim needs or wants, and/or for the financial or other advantage of the perpetrator or facilitator, and/or through violence or the threat of violence.

The abuse can be perpetrated by males or females, and children or adults. It can be a one-off occurrence or a series of incidents over time, and range from opportunistic to complex organised abuse.

The victim can be exploited even when the activity appears to be consensual. It does not always involve physical contact and can happen online. Some specific forms of CCE can include children being forced or manipulated into transporting drugs or money through county lines, working in cannabis factories, shoplifting or pickpocketing. They can also be forced or manipulated into committing vehicle crime or threatening/committing serious violence to others.

Children can become trapped by this type of exploitation as perpetrators can threaten victims (and their families) with violence, or entrap and coerce them into debt. They may be coerced into carrying weapons such as knives or begin to carry a knife for a sense of protection from harm from others. As children involved in criminal exploitation often commit crimes themselves, their vulnerability as victims is not always recognised by adults and professionals, (particularly older children), and they are not treated as victims despite the harm they have experienced. They may still have been criminally exploited even if the activity appears to be something they have agreed or consented to.

It is important to note that the experience of girls who are criminally exploited can be very different to that of boys. The indicators may not be the same, however professionals should be aware that girls are at risk of criminal exploitation too. It is also important to note that both boys and girls being criminally exploited may be at higher risk of sexual exploitation.

Indicators of CCE can include a child:

- Appearing with unexplained gifts or new possessions
- Associating with other children involved in exploitation
- Suffering from changes in emotional wellbeing
- Misusing drugs and alcohol
- Going missing for periods of time or regularly coming home late
- Regularly missing school or education
- Not taking part in education

If a member of staff suspects CCE, they will discuss this with the DSL. The DSL will trigger the local safeguarding procedures, including a referral to *the local authority's children's social care team and the police, if appropriate.*

County Lines

County lines is a term used to describe gangs and organised criminal networks involved in exporting illegal drugs (primarily crack cocaine and heroin) into one or more importing areas [within the UK], using dedicated mobile phone lines or other form of "deal line".

Exploitation is an integral part of the county lines offending model with children and vulnerable adults exploited to move [and store] drugs and money. Offenders will often use coercion, intimidation, violence (including sexual violence) and weapons to ensure compliance of victims.

Children can easily become trapped by this type of exploitation as county lines gangs create drug debts and can threaten serious violence and kidnap towards victims (and their families) if they attempt to leave the county lines network.

Serious violence

Signs that a child is at risk from, or involved with serious violent crime include:

- include increased absence from school;
- a change in friendships or relationships with older individuals or groups;
- a significant decline in performance;
- signs of self-harm or a significant change in wellbeing;
- signs of assault or unexplained injuries; and/or
- unexplained gifts or new possessions, which could also indicate that children have been approached by, or are involved with, individuals associated with criminal networks or gangs and may be at risk of criminal exploitation.

There are a range of risk factors which increase the likelihood of involvement in serious violence, such as

- being male;
- having been frequently absent or permanently excluded from school; and/or
- having experienced child maltreatment and having been involved in offending, such as theft or robbery.

If a member of staff suspects a child is involved in or at risk of serious violent crime, they will discuss this with the DSL. The DSL will trigger the local safeguarding procedures, including a referral to the local authority's children's social care team and the police, if appropriate.

Child sexual exploitation

Child sexual exploitation (CSE) is a form of child sexual abuse where an individual or group takes advantage of an imbalance of power to coerce, manipulate or deceive a child into sexual activity, in exchange for something the victim needs or wants and/or for the financial advantage or increased status of the perpetrator or facilitator. It may, or may not, be accompanied by violence or threats of violence.

The abuse can be perpetrated by males or females, and children or adults. It can be a one-off occurrence or a series of incidents over time, and range from opportunistic to complex organised abuse.

CSE can affect any child, who has been coerced into engaging in sexual activities. This includes 16 and 17 year olds who can legally consent to have sex. Some children may not realise they are being exploited e.g. they believe they are in a genuine romantic relationship.

Children and children often trust their abuser and may be tricked into believing they are in a loving, consensual relationship.

CSE can include both physical contact (penetrative and non-penetrative acts) and non-contact sexual activity. It can also happen online. For example, children may be persuaded or forced to share sexually explicit images of themselves, have sexual conversations by text, or take part in sexual

activities using a webcam. CSE may also occur without the victim's immediate knowledge, for example through others copying videos or images.

In addition to the CCE indicators above, indicators of CSE can include a child:

- Having an older boyfriend or girlfriend
- Suffering from sexually transmitted infections or becoming pregnant

If a member of staff suspects CSE, they will discuss this with the DSL. The DSL will trigger the local safeguarding procedures, including a referral to the local authority's children's social care team and the police, if appropriate.

Child abduction and community safety incidents

Child abduction is the unauthorised removal or retention of a minor from a parent or anyone with legal responsibility for the child. Child abduction can be committed by parents or other family members; by people known but not related to the victim (such as neighbours, friends and acquaintances); and by strangers. Other community safety incidents in the vicinity of a school can raise concerns amongst children and parents, for example, people loitering nearby or unknown adults engaging children in conversation.

In order to keep children safe at school we;

- Approve of children bringing mobiles to school for use on the journey in to school/ going home. Phones are handed in at school and are collected at the end of the day.
- Register completed by 9.00am and missing children's families have been called or contacted by 9.30am- any additional parent also made aware in situations where the child may reside with both parents at any point or the child's parents relationship has broken down and they cannot communicate.
- House visit made for all children on our vulnerable list that we have no explanation for
- Contact made to the social worker if this is applicable

In the event that anyone has concerns about child abduction or community safety incidents, they should speak to the Designated Safeguarding Lead immediately.

Cybercrime

Cybercrime is criminal activity committed using computers and/or the internet. It is broadly categorised as either 'cyber-enabled' (crimes that can happen off-line but are enabled at scale and at speed on-line) or 'cyber dependent' (crimes that can be committed only by using a computer).

Cyber-dependent crimes include;

- unauthorised access to computers (illegal 'hacking'), for example accessing a school's computer network to look for test paper answers or change grades awarded;
- denial of Service (Dos or DDoS) attacks or 'booting'. These are attempts to make a computer, network or website unavailable by overwhelming it with internet traffic from multiple sources; and,
- making, supplying or obtaining malware (malicious software) such as viruses, spyware, ransomware, botnets and Remote Access Trojans with the intent to commit further offence, including those above.

Children with particular skill and interest in computing and technology may inadvertently or deliberately stray into cyber-dependent crime. If we have concerns about a child and possible risk of being drawn into cyber crime, the designated safeguarding lead (or a deputy) will consider referring into the Cyber Choices programme. This is a nationwide police programme supported by the Home Office and led by the National Crime Agency, working with regional and local policing.

Domestic abuse

Domestic Abuse is any incident or pattern of incidents of controlling, coercive, threatening behaviour, violence or abuse between those aged 16 or over who are, or have been, intimate partners or family members regardless of gender or sexuality.

Types of domestic abuse include intimate partner violence, abuse by family members, teenage relationship abuse (abuse in intimate personal relationships between children) and child/adolescent to parent violence and abuse.

The abuse can encompass, but is not limited to: psychological; physical; sexual; financial; and emotional.

All children can witness and be adversely affected by domestic abuse in the context of their home life where domestic abuse occurs between family members. Domestic abuse can impact on children through seeing, hearing or experiencing the effects of domestic abuse and/or experiencing it through their own intimate relationships. Exposure to domestic abuse and/or violence can have a serious, long lasting emotional and psychological impact on children. In some cases, a child may blame themselves for the abuse or may have had to leave the family home as a result.

Anyone can be a victim of domestic abuse, regardless of gender, age, ethnicity, socioeconomic status, sexuality or background, and domestic abuse can take place inside or outside of the home. Children who witness domestic abuse are also victims.

At Croyland Primary School we are working in partnership with North Northamptonshire Council and West Northamptonshire Council and Northamptonshire Police to identify and provide appropriate support to pupils who have experienced domestic abuse in their household; nationally this scheme is called Operation Encompass. In order to achieve this, North Northamptonshire Council and West Northamptonshire Council will share police information with the Designated Safeguarding Lead(s) of all domestic incidents where one of our pupils has been affected. On receipt of any information, the Designated Safeguarding Lead will decide on the appropriate support the child requires, this could be silent or overt.

All information sharing and resulting actions will be undertaken in accordance with the [‘NSCP Protocol for Domestic Abuse – Notifications to Schools’](#). We will record this information and store this information in accordance with the record keeping procedures outlined in this policy.

The DSL will provide support according to the child’s needs and update records about their circumstances.

Homelessness

Being homeless or being at risk of becoming homeless presents a real risk to a child’s welfare.

The DSL [and deputy/deputies] will be aware of contact details and referral routes in to the local housing authority so they can raise/progress concerns at the earliest opportunity (where appropriate and in accordance with local procedures).

Where a child has been harmed or is at risk of harm, the DSL will also make a referral to children’s social care.

So-called ‘honour-based’ abuse (including FGM and forced marriage)

So-called ‘honour-based’ abuse (HBA) encompasses incidents or crimes committed to protect or defend the honour of the family and/or community, including FGM, forced marriage, and practices such as breast ironing.

Abuse committed in this context often involves a wider network of family or community pressure and can include multiple perpetrators.

All forms of HBA are abuse and will be handled and escalated as such. All staff will be alert to the possibility of a child being at risk of HBA or already having suffered it. If staff have a concern, they will speak to the DSL, who will activate local safeguarding procedures.

Female Genital Mutilation

The DSL will make sure that staff have access to appropriate training to equip them to be alert to children affected by FGM or at risk of FGM.

Section 10 of this policy sets out the procedures to be followed if a staff member discovers that an act of FGM appears to have been carried out or suspects that a pupil is at risk of FGM.

Indicators that FGM has already occurred include:

- A pupil confiding in a professional that FGM has taken place
- A mother/family member disclosing that FGM has been carried out
- A family/pupil already being known to social services in relation to other safeguarding issues
- A girl:
 - Having difficulty walking, sitting or standing, or looking uncomfortable
 - Finding it hard to sit still for long periods of time (where this was not a problem previously)
 - Spending longer than normal in the bathroom or toilet due to difficulties urinating
 - Having frequent urinary, menstrual or stomach problems
 - Avoiding physical exercise or missing PE
 - Being repeatedly absent from school, or absent for a prolonged period
 - Demonstrating increased emotional and psychological needs – for example, withdrawal or depression, or significant change in behaviour
 - Being reluctant to undergo any medical examinations
 - Asking for help, but not being explicit about the problem
 - Talking about pain or discomfort between her legs

Potential signs that a pupil may be at risk of FGM include:

- The girl's family having a history of practicing FGM (this is the biggest risk factor to consider)
- FGM being known to be practiced in the girl's community or country of origin
- A parent or family member expressing concern that FGM may be carried out
- A family not engaging with professionals (health, education or other) or already being known to social care in relation to other safeguarding issues
- A girl:
 - Having a mother, older sibling or cousin who has undergone FGM
 - Having limited level of integration within UK society
 - Confiding to a professional that she is to have a "special procedure" or to attend a special occasion to "become a woman"
 - Talking about a long holiday to her country of origin or another country where the practice is prevalent, or parents stating that they or a relative will take the girl out of the country for a prolonged period
 - Requesting help from a teacher or another adult because she is aware or suspects that she is at immediate risk of FGM
 - Talking about FGM in conversation – for example, a girl may tell other children about it (although it is important to take into account the context of the discussion)
 - Being unexpectedly absent from school
 - Having sections missing from her 'red book' (child health record) and/or attending a travel clinic or equivalent for vaccinations/anti-malarial medication

The above indicators and risk factors are not intended to be exhaustive.

Forced marriage

Forcing a person into marriage is a crime. A forced marriage is one entered into without the full and free consent of one or both parties and where violence, threats, or any other form of coercion is used to cause a person to enter into a marriage. Threats can be physical or emotional and psychological. Staff will receive training around forced marriage and the presenting symptoms. We are aware of the 'one chance' rule, i.e. we may only have one chance to speak to the potential victim and only one chance to save them.

If a member of staff suspects that a pupil is being forced into marriage, they will speak to the pupil about their concerns in a secure and private place. They will then report this to the DSL.

The DSL will:

- Speak to the pupil about the concerns in a secure and private place
- Activate the local safeguarding procedures and refer the case to the local authority's designated officer
- Seek advice from the Forced Marriage Unit on 020 7008 0151 or fmufco.gov.uk
- Refer the pupil to an education welfare officer, pastoral tutor, learning mentor, or school counsellor, as appropriate

Private Fostering

A private fostering arrangement is one that is made privately (without the involvement of a local authority) for the care of a child under the age of 16 years (under 18, if disabled) by someone other than a parent or close relative, in their own home, with the intention that it should last for 28 days or more.

A close family relative is defined as a 'grandparent, brother, sister, uncle or aunt' and includes half-siblings and step-parents; it does not include great-aunts or uncles, great grandparents or cousins. Parents and private foster carers both have a legal duty to inform the relevant local authority at least six weeks before the arrangement is due to start; not to do so is a criminal offence.

Whilst most privately fostered children are appropriately supported and looked after, they are a potentially vulnerable group who should be monitored by the local authority, particularly when the child has come from another country. In some cases, privately fostered children are affected by abuse, neglect and exploitation, or be involved in trafficking, child sexual exploitation or modern-day slavery.

Schools have a mandatory duty to report to the local authority where they are aware or suspect that a child is subject to a private fostering arrangement. Although schools have a duty to inform the local authority, there is no duty for anyone, including the private foster carer or social workers to inform the school. However, it should be clear to the school who has parental responsibility.

School staff should notify the designated safeguarding lead when they become aware of private fostering arrangements. The designated safeguarding lead will speak to the family of the child involved to check that they are aware of their duty to inform the LA. The school itself has a duty to inform the local authority of the private fostering arrangements.

On admission to the school, we will take steps to verify the relationship of the adults to the child who is being registered.

Preventing radicalisation

Radicalisation refers to the process by which a person comes to support terrorism and extremist ideologies associated with terrorist groups. Children may be susceptible to radicalisation into terrorism.

The use or threat of terrorism must be designed to influence the government or to intimidate the public and is made for the purpose of advancing a political, religious or ideological cause.

Schools have a duty to prevent children from being drawn into terrorism. The DSL will undertake Prevent **awareness training** and make sure that staff have access to appropriate training to equip them to identify children at risk.

We will assess the risk of children in our school being drawn into terrorism. This assessment will be based on an understanding of the potential risk in our local area, in collaboration with our local safeguarding partners and local police force.

We will ensure that suitable internet filtering is in place, and equip our pupils to stay safe online at school and at home.

There is no single way of identifying an individual who is likely to be susceptible to an extremist ideology. Radicalisation can occur quickly or over a long period.

Staff will be alert to changes in pupils' behaviour. The government website [Educate Against Hate](#)¹⁵ and the charity [NSPCC](#)¹⁶ say that signs that a pupil is being radicalised can include:

- Refusal to engage with, or becoming abusive to, peers who are different from themselves
- Becoming susceptible to conspiracy theories and feelings of persecution
- Changes in friendship groups and appearance
- Rejecting activities they used to enjoy
- Converting to a new religion
- Isolating themselves from family and friends
- Talking as if from a scripted speech
- An unwillingness or inability to discuss their views
- A sudden disrespectful attitude towards others
- Increased levels of anger
- Increased secretiveness, especially around internet use
- Expressions of sympathy for extremist ideologies and groups, or justification of their actions
- Accessing extremist material online, including on Facebook or Twitter
- Possessing extremist literature
- Being in contact with extremist recruiters and joining, or seeking to join, extremist organisations

Children who are at risk of radicalisation may have low self-esteem, or may be victims of bullying or discrimination. It is important to note that these signs can also be part of normal teenage behaviour – staff should have confidence in their instincts and seek advice if something feels wrong.

If staff are concerned about a pupil, they will follow our procedures set out in Section 9 of this policy, including discussing their concerns with the DSL. Staff should always take action if they are worried. Further information on the school's measures to prevent radicalisation are set out in other school policies and procedures, including our online safety policy, The Promotion of Positive Behaviour Policy and our Child Protection and Safeguarding Training document.

Missing pupils

Our procedures are designed to ensure that a missing child is found and returned to effective supervision as soon as possible. If a child goes missing, we will refer to our Missing Child Policy.

[See link to NNC procedures for Children Missing Education](#)¹⁷

Non-collection of children

¹⁵ <https://educateagainsthate.com/signs-of-radicalisation/>

¹⁶ <https://www.nspcc.org.uk/keeping-children-safe/reporting-abuse/dedicated-helplines/protecting-children-from-radicalisation/>

¹⁷ <https://www.northamptonshire.gov.uk/councilservices/children-families-education/schools-and-education/information-for-school-staff/pupil-support-and-inclusion/attendance-and-behaviour/Pages/children.aspx>

If a child is not collected at the end of the session/day, we will follow our Children Not Collected Protocol.

Appendix C: Safer recruitment

We adhere to Part 3 of Keeping Children Safe in Education at all times. We consider safeguarding throughout the recruitment process, including when defining and advertising roles.

We will record all information on the checks carried out in the school's single central record (SCR). Copies of these checks, where appropriate, will be held in individuals' personnel files. We follow requirements and best practice in retaining copies of these checks, as set out below.

Pre-appointment safer recruitment

We will include the following in all job advertisements:

- our commitment to safeguarding and promoting the welfare of children;
- clear confirmation that enhanced safeguarding checks will be undertaken;
- the safeguarding responsibilities of the post as per the job description and personal specification; and
- whether the post is exempt from the Rehabilitation of Offenders Act 1974 and the amendments to the Exceptions Order 1975, 2013 and 2020.

Where a role involves engaging in regulated activity relevant to children, we will include a statement in the application form or elsewhere in the information provided to applicants that it is an offence to apply for the role if the applicant is barred from engaging in regulated activity relevant to children.

All applicants will be provided with:

- a copy of Croyland Primary School's Safeguarding and Child Protection Policy and practices;
- a policy on employment of ex-offenders (available on the website)

Applicants

We require applicants to provide:

- personal details, current and former names, current address and their national insurance number;
- details of their present (or last) employment and reason for leaving;
- full employment history, (since leaving school, including education, employment and voluntary work) including reasons for any gaps in employment;
- qualifications, the awarding body and date of award;
- details of referees/references; and
- a statement of the personal qualities and experience that the applicant believes are relevant to their suitability for the post advertised and how they meet the person specification.

We will not accept copies of curriculum vitae in place of an application form.

Shortlisting and selection

Shortlisted candidates will be asked to complete a self-declaration of their criminal record or information that would make them unsuitable to work with children. For more details of what this will contain, please see Part 3 of Keeping Children Safe in Education (2024).

At least two people will carry out shortlisting and they will explore any potential concerns, including inconsistencies and/or gaps in unemployment. During the shortlisting process, at least one person will have completed Safer Recruitment training.

We will seek references on all shortlisted candidates, including internal candidates, before interview. We will scrutinise these and resolve any concerns before confirming appointments. The references requested will ask specific questions about the suitability of the applicant to work with children.

When asked to provide references, we will ensure the information confirms whether we are satisfied with the applicant's suitability to work with children and provide the facts of any substantiated safeguarding allegations.

We will also consider carrying out an online search on shortlisted candidates to help identify any incidents or issues that are publicly available online. (Specific guidance for this must be developed by the school HR advisors)

New staff

When appointing new staff, we will:

- we will ensure that appropriate checks are carried out to ensure that individuals are not disqualified under the 2018 Childcare Disqualification Regulations and Childcare Act 2006. Where we take a decision that an individual falls outside of the scope of these regulations and we do not carry out such checks, we will retain a record of our assessment on the individual's personnel file. This will include our evaluation of any risks and control measures put in place, and any advice sought.
- verify a candidate's identity. This includes demonstrating an awareness for the potential for individuals changing their name. Best practice is checking the name on their birth certificate, where this is available;
- obtain (via the applicant) an enhanced DBS check (including children's barred list information, for those who will be engaging in regulated activity with children);
- obtain a separate children's barred list check if an individual will start work in regulated activity with children before the DBS certificate is available;
- verify the candidate's mental and physical fitness to carry out their work responsibilities;
- verify the person's right to work in the UK, including EU nationals;
- If the person has lived or worked outside the UK, make any further checks the school or college consider appropriate;
- verify professional qualifications, as appropriate; and
- ensure that an applicant to be employed to carry out teaching work is not subject to a prohibition order.
- Check that candidates taking up a management position are not subject to a prohibition from management (section 128) direction made by the Secretary of State.
- Carry out further additional checks, as appropriate, on candidates who have lived or worked outside of the UK. These could include, where available:
 - For all staff, including teaching positions: **criminal records checks for overseas applicants**
 - For teaching positions: obtaining a letter from the professional regulating authority in the country where the applicant has worked, confirming that they have not imposed any sanctions or restrictions on that person, and/or are aware of any reason why that person may be unsuitable to teach

Regulated activity means a person who will be:

- Responsible, on a regular basis in a school or college, for teaching, training, instructing, caring for or supervising children; or
- Carrying out paid, or unsupervised unpaid, work regularly in a school or college where that work provides an opportunity for contact with children; or
- Engaging in intimate or personal care or overnight activity, even if this happens only once and regardless of whether they are supervised or not

Existing staff

If we have concerns about an existing member of staff's suitability to work with children, we will carry out all the relevant checks as if the individual was a new member of staff. We will also do this if an individual moves from a post that is not regulated activity to one that is.

We will refer to the DBS anyone who has harmed, or poses a risk of harm, to a child or vulnerable adult where:

- We believe the individual has engaged in **relevant conduct**;
or
- The individual has received a caution or conviction for a relevant offence, or there is reason to believe the individual has committed a listed relevant offence, under the **Safeguarding Vulnerable Groups Act 2006 (Prescribed Criteria and Miscellaneous Provisions) Regulations 2009**; or
- The 'harm test' is satisfied in respect of the individual (i.e. they may harm a child or vulnerable adult or put them at risk of harm); and
- The individual has been removed from working in regulated activity (paid or unpaid) or would have been removed if they had not left

Agency and third-party staff

We will obtain written notification from any agency or third-party organisation that it has carried out the necessary safer recruitment checks that we would otherwise perform. We will also check that the person presenting themselves for work is the same person on whom the checks have been made.

Contractors

We will ensure that any contractor, or any employee of the contractor, who is to work at the school has had the appropriate level of DBS check (this includes contractors who are provided through a PFI or similar contract). This will be:

- An enhanced DBS check with barred list information for contractors engaging in regulated activity
- An enhanced DBS check, not including barred list information, for all other contractors who are not in regulated activity but whose work provides them with an opportunity for regular contact with children
- We will obtain the DBS check for self-employed contractors.
- We will not keep copies of such checks for longer than 6 months.
- Contractors who have not had any checks will not be allowed to work unsupervised or engage in regulated activity under any circumstances.
- We will check the identity of all contractors and their staff on arrival at the school.
- For self-employed contractors such as music teachers or sports coaches, we will ensure that appropriate checks are carried out to ensure that individuals are not disqualified under the 2018 Childcare Disqualification Regulations and Childcare Act 2006. Where we decide that an individual falls outside of the scope of these regulations and we do not carry out such checks, we will retain a record of our assessment. This will include our evaluation of any risks and control measures put in place, and any advice sought.

Trainee/student teachers

Where applicants for initial teacher training are salaried by us, we will ensure that all necessary checks are carried out.

Where trainee teachers are fee-funded, we will obtain written confirmation from the training provider that necessary checks have been carried out and that the trainee has been judged by the provider to be suitable to work with children. Trainees/student teachers are issued with a red badge to be easily identifiable around school. On arrival to school, they are requested to show photographic ID and proof of placement from the school/college.

This includes checks to ensure that individuals are not disqualified under the 2018 Childcare Disqualification Regulations and Childcare Act 2006.

Volunteers

We will:

- Never leave an unchecked volunteer unsupervised or allow them to work in regulated activity.
- Obtain an enhanced DBS check with barred list information for all volunteers who are new to working in regulated activity.
- Carry out a risk assessment when deciding whether to seek an enhanced DBS check without barred list information for any volunteers not engaging in regulated activity. We will retain a record of this risk assessment.
- Ensure that appropriate checks are carried out to ensure that individuals are not disqualified under the 2018 Childcare Disqualification Regulations and Childcare Act 2006. Where we decide that an individual falls outside of the scope of these regulations and we do not carry out such checks, we will retain a record of our assessment. This will include our evaluation of any risks and control measures put in place, and any advice sought.

Governors

Croyland Primary School will ensure:

- All governors will have an enhanced DBS check without barred list information.
- They will have an enhanced DBS check with barred list information if working in regulated activity.
- All governors will also have a section 128 check (as a section 128 direction disqualifies an individual from being a maintained school governor).

All proprietors, trustees, local governors and members will also have the following checks:

- A section 128 check (to check prohibition on participation in management under [section 128 of the Education and Skills Act 2008](#)). [Section 128 checks are only required for local governors if they have retained or been delegated any management responsibilities.]
- Identity
- Right to work in the UK
- Other checks deemed necessary if they have lived or worked outside the UK

All governors will also have the following checks:

- Identity
- Right to work in the UK
- Other checks deemed necessary if they have lived or worked outside the UK

Appendix D: How the school responds to allegations that may meet the harms threshold

This section of this policy applies to all cases in which it is alleged that a current member of staff, including a supply teacher or volunteer or contractor, has:

- behaved in a way that has harmed a child, or may have harmed a child, or
- possibly committed a criminal offence against or related to a child, or
- behaved towards a child or children in a way that indicates he or she may pose a risk of harm to children, or
- behaved or may have behaved in a way that indicates they may not be suitable to work with children.

It applies regardless of whether the alleged abuse took place in the school or elsewhere. Allegations against a teacher who is no longer teaching and historical allegations of abuse will be referred to the police.

If we're in any doubt as to whether a concern meets the harm threshold, we will consult our local authority designated officer (LADO).

We will deal with any allegation of abuse against a member of staff or volunteer quickly, in a fair and consistent way that provides effective child protection while also supporting the individual who is the subject of the allegation. Our procedures for dealing with allegations will be applied with common sense and judgement.

For more information about how the school responds to low-level concerns (concerns do not meet the harms threshold) please see Section 17 of this policy.

Suspension of the accused until the case is resolved

Suspension will not be the default position, and will only be considered in cases where there is reason to suspect that a child or other children is/are at risk of harm, or the case is so serious that it might be grounds for dismissal. In such cases, we will only suspend an individual if we have considered all other options available and there is no reasonable alternative. We will seek views from our personnel adviser, the local authority designated officer/s, the police and/or Children's Social Care (as appropriate).

Based on an assessment of risk, we will consider alternatives such as:

- Redeployment within the school so that the individual does not have direct contact with the child or children concerned.
- Providing an assistant to be present when the individual has contact with children
- Redeploying the individual to alternative work in the school so that they do not have unsupervised access to children.
- Moving the child or children to classes where they will not come into contact with the individual, making it clear that this is not a punishment and parents have been consulted.
- Temporarily redeploying the individual to another role in a different location, for example to an alternative school or other work for the local authority.

Definitions for outcomes of allegation investigations

- **Substantiated:** there is sufficient evidence to prove the allegation
- **Malicious:** there is sufficient evidence to disprove the allegation and there has been a deliberate act to deceive
- **False:** there is sufficient evidence to disprove the allegation
- **Unsubstantiated:** there is insufficient evidence to either prove or disprove the allegation (this

does not imply guilt or innocence)

- **Unfounded:** to reflect cases where there is no evidence or proper basis which supports the allegation being made

Procedure for dealing with allegations

In the event of an allegation that meets the criteria above, the Headteacher (or chair of governors where the Headteacher is the subject of the allegation) – the ‘case manager’ – will take the following steps:

- Immediately discuss the allegation with the designated officer at the local authority. This is to consider the nature, content and context of the allegation and agree a course of action, including whether further enquiries are necessary to enable a decision on how to proceed, and whether it is necessary to involve the police and/or children’s social care services. (The case manager may, on occasion, consider it necessary to involve the police *before* consulting the designated officer – for example, if the accused individual is deemed to be an immediate risk to children or there is evidence of a possible criminal offence. In such cases, the case manager will notify the designated officer as soon as practicably possible after contacting the police).
- Inform the accused individual of the concerns or allegations and likely course of action as soon as possible after speaking to the designated officer (and the police or children’s social care services, where necessary). Where the police and/or children’s social care services are involved, the case manager will only share such information with the individual as has been agreed with those agencies.
- Where appropriate (in the circumstances described above), carefully consider whether suspension of the individual from contact with children at the school is justified or whether alternative arrangements such as those outlined above can be put in place. Advice will be sought from the designated officer, police and/or children’s social care services, as appropriate.
- **If immediate suspension is considered necessary**, agree and record the rationale for this with the designated officer. The record will include information about the alternatives to suspension that have been considered, and why they were rejected. Written confirmation of the suspension will be provided to the individual facing the allegation or concern within 1 working day, and the individual will be given a named contact at the school and their contact details.
- **If it is decided that no further action is to be taken** in regard to the subject of the allegation or concern, record this decision and the justification for it and agree with the designated officer what information should be put in writing to the individual and by whom, as well as what action should follow both in respect of the individual and those who made the initial allegation.
- **If it is decided that further action is needed**, take steps as agreed with the designated officer to initiate the appropriate action in school and/or liaise with the police and/or Children’s Social Care services as appropriate.
- Provide effective support for the individual facing the allegation or concern, including appointing a named representative to keep them informed of the progress of the case and considering what other support is appropriate.
- Inform the parents or carers of the child/children involved about the allegation as soon as possible if they do not already know (following agreement with children’s social care services and/or the police, if applicable). The case manager will also inform the parents or carers of the requirement to maintain confidentiality about any allegations made against teachers (where this applies) while investigations are ongoing. Any parent or carer who wishes to have the confidentiality restrictions removed in respect of a teacher will be advised to seek legal advice
- Keep the parents or carers of the child/children involved informed of the progress of the case and the outcome, where there is not a criminal prosecution, including the outcome of any disciplinary process (in confidence)
- Make a referral to the DBS where it is thought that the individual facing the allegation or concern

has engaged in conduct that harmed or is likely to harm a child, or if the individual otherwise poses a risk of harm to a child

- We will inform Ofsted of any allegations of serious harm or abuse by any person living, working, or looking after children at the premises (whether the allegations relate to harm or abuse committed on the premises or elsewhere), and any action taken in respect of the allegations. This notification will be made as soon as reasonably possible and always within 14 days of the allegations being made.
- If the school is made aware that the Secretary of State has made an interim prohibition order in respect of an individual, we will immediately suspend that individual from teaching, pending the findings of the investigation by the Teaching Regulation Agency.
- Where the police are involved, wherever possible the local authority will ask the police at the start of the investigation to obtain consent from the individuals involved to share their statements and evidence for use in the school's disciplinary process, should this be required at a later point.

Additional considerations for supply staff

If there are concerns or an allegation is made against someone not directly employed by the school, such as supply staff provided by an agency, we will take the actions below in addition to our standard procedures.

We will never cease to use a supply teacher for safeguarding reasons without first finding out the facts and liaising with the Local Authority Designated Officer to reach a suitable outcome. The governing board will discuss with the agency whether it is appropriate to suspend the supply teacher, or redeploy them to another part of the school, while the school carries out the investigation

We will involve the agency fully, but the school will take the lead in collecting the necessary information and providing it to the local authority designated officer as required.

We will address issues such as information sharing, to ensure any previous concerns or allegations known to the agency are taken into account (we will do this, for example, as part of the allegations management meeting or by liaising directly with the agency where necessary).

When using an agency, we will inform them of our process for managing allegations, and keep them updated about our policies as necessary, and will invite the agency's HR manager or equivalent to meetings as appropriate.

Timescales

- Any cases where it is clear immediately that the allegation is unsubstantiated or malicious will be resolved within 1 week.
- If the nature of an allegation does not require formal disciplinary action, we will institute appropriate action within 3 working days.
- If a disciplinary hearing is required and can be held without further investigation, we will hold this within 15 working days.

Specific actions

Action following a criminal investigation or prosecution

The case manager will discuss with the designated officer whether any further action, including disciplinary action, is appropriate and, if so, how to proceed, taking into account information provided by the police and/or children's social care services.

Conclusion of a case where the allegation is substantiated

If the allegation is substantiated and the individual is dismissed or the school ceases to use their services, or the individual resigns or otherwise ceases to provide their services, the case manager

and the school's personnel adviser will discuss with the designated officer whether to make a referral to the DBS for consideration of whether inclusion on the barred lists is required. If they think that the individual has engaged in conduct that has harmed (or is likely to harm) a child, or if they think the person otherwise poses a risk of harm to a child, they must make a referral to the DBS.

If the individual concerned is a member of teaching staff, the case manager and personnel adviser will discuss with the designated officer whether to refer the matter to the Teaching Regulation Agency to consider prohibiting the individual from teaching.

Individuals returning to work after suspension

If it is decided on the conclusion of a case that an individual who has been suspended can return to work, the case manager will consider how best to facilitate this.

The case manager will also consider how best to manage the individual's contact with the child or children who made the allegation, if they are still attending the school.

Unsubstantiated or malicious allegations

If an allegation is shown to be deliberately invented, or malicious, the Headteacher, or other appropriate person in the case of an allegation against the Headteacher, will consider whether any disciplinary action is appropriate against the pupil(s) who made it, or whether the police should be asked to consider whether action against those who made the allegation might be appropriate, even if they are not a pupil.

Confidentiality

The school will make every effort to maintain confidentiality and guard against unwanted publicity while an allegation is being investigated or considered.

The case manager will take advice from the local authority's designated officer, police and children's social care services, as appropriate, to agree:

- Who needs to know about the allegation and what information can be shared.
- How to manage speculation, leaks and gossip, including how to make parents or carers of a child/children involved aware of their obligations with respect to confidentiality.
- What, if any, information can be reasonably given to the wider community to reduce speculation.
- How to manage press interest if, and when, it arises.

Record-keeping

The case manager will maintain clear records about any case where the allegation or concern meets the criteria above and store them on the individual's confidential personnel file for the duration of the case. Such records will include:

- A clear and comprehensive summary of the allegation.
- Details of how the allegation was followed up and resolved.
- Notes of any action taken and decisions reached (and justification for these, as stated above).

If an allegation or concern is not found to have been malicious, the school will retain the records of the case on the individual's confidential personnel file, and provide a copy to the individual.

Where records contain information about allegations of sexual abuse, we will preserve these for the Independent Inquiry into Child Sexual Abuse (IICSA), for the term of the inquiry. We will retain all other records at least until the individual has reached normal pension age, or for 10 years from the date of the allegation if that is longer. The records of any allegation that is found to be malicious will be deleted from the individual's personnel file.

References

When providing employer references, we will not refer to any allegation that has been proven to be false, unsubstantiated or malicious, or any history of allegations where all such allegations have been proven to be false, unsubstantiated or malicious.

Learning lessons

After any cases where the allegations are *substantiated*, we will review the circumstances of the case with the local authority's designated officer to determine whether there are any improvements that we can make to the school's procedures or practice to help prevent similar events in the future.

This will include consideration of (as applicable):

- Issues arising from the decision to suspend the member of staff
- The duration of the suspension
- Whether or not the suspension was justified
- The use of suspension when the individual is subsequently reinstated. We will consider how future investigations of a similar nature could be carried out without suspending the individual

For referrals regarding adults in education and other information on the role of the Designated Officer (formerly LADO) please visit: <http://www.northamptonshirescb.org.uk/schools/referrals-eha/designated-officer/>

The Chair of Governors in this school is:

NAME: Tracey Elliott **CONTACT NUMBER:** 07961158946

In the absence of the Chair of Governors, the Vice Chair should be contacted. The Vice Chair in this school is:

NAME: Valerie Anslow **CONTACT NUMBER:** 07870473270

Multi-Agency Safeguarding Hub: **0300 126 7000 (Option 1)**

If it is decided that the allegation does not meet the threshold for safeguarding, it will be handed back to the employer for consideration via the school's internal procedures.

Appendix E: Online Safety

Teaching pupils to stay safe online and keeping children safe online in school is a crucial part of safeguarding. It is essential that children are safeguarded from potentially harmful and inappropriate online material. We take a whole school approach to online to protect and educate pupils, students, and staff in their use of technology and establishes mechanisms to identify, intervene in, and escalate any concerns where appropriate.

Our approach to online safety runs through every aspect of our work with children, including (but not limited to):

- curriculum planning and PSHE & RSHE;
- teacher training;
- the role and responsibilities of the designated safeguarding lead and our Online Safety Lead; and
- parental engagement

This appendix complements and should be read alongside our Online Safety policy. Staff must read the Safe Use of Online Technology Policy in conjunction with our Code of Conduct in relation to personal online behaviour. All staff receive online safety training at induction, with regular updates and formal annual training thereafter.

The Designated Safeguarding Lead (DSL) takes lead responsibility for online safety. The DSL attends training regularly to ensure that they understand the unique risks associated with online safety and to ensure that they are confident that they have the relevant knowledge and up to date capability required to keep children safe whilst they are online at school.

Risks to children

The breadth of issues classified within online safety is considerable, but can be categorised into four areas of risk:

- **content:** being exposed to illegal, inappropriate or harmful content, for example: pornography, fake news, racism, misogyny, self-harm, suicide, anti-Semitism, radicalisation and extremism.
- **contact:** being subjected to harmful online interaction with other users; for example: peer to peer pressure, commercial advertising and adults posing as children or young adults with the intention to groom or exploit them for sexual, criminal, financial or other purposes'.
- **conduct:** personal online behaviour that increases the likelihood of, or causes, harm; for example, making, sending and receiving explicit images (e.g consensual and non-consensual sharing of nudes and semi-nudes and/or pornography, sharing other explicit images and online bullying; and
- **commerce:** risks such as online gambling, inappropriate advertising, phishing and or financial scams.

We refer to these four areas of risk when planning our approach to online safety and ensuring that we are safeguarding children against a broad spectrum of potential online harms.

Filtering and monitoring

In order to keep children safe when using school IT equipment, we ensure that suitable internet filtering is in place, and equip our pupils to stay safe online in school and at home.

Staff devices are monitored by the Netsweeper software to ensure they only go on websites allowed at their level. This will block anything sensitive from being viewed. This software cannot be uninstalled or bypassed.

We are mindful that “over-blocking” can lead to unreasonable restrictions as to what children can be taught with regard to online teaching and safeguarding and mitigate against this by using netsweeper to block only specific words and adult related websites and content. This software cannot be uninstalled or bypassed as it will see any computer that doesn't have it on as an outside computer and give it the lowest form of rights. The appropriateness of any filters and monitoring systems are a matter for will be informed in part, by the risk assessment required by the Prevent Duty.

Pupil mobile phones

Pupils are not invited to bring mobile phones to school. In the event that they are permitted to walk to and from school unaccompanied, Croyland Primary School recognises the safety aspect of allowing mobiles for this purpose. On entry to the classroom, pupils hand in their phones to the class adult and collect them at the end of the day as they leave.

See Section 16 of this policy for more details about staff use of mobile phones.

Remote learning

Pupils are provided with work set by their class teacher and should not have access to inappropriate material by following the instructions given.

For pupils that have been issued with a device, they have a filtering programme on.

Pupils and parents are provided with a contact name and email in the event they are working from home, should they need help or need to report something unsuitable.

How to report online safety concerns

If pupils, parents or staff have any concerns about online safety, or need to make a disclosure, they should speak to the Designated Safeguarding Lead or deputy without delay. The contact details for these members of staff can be found on the front of this policy.

Regular review of our approach to online safety

We recognise that technology, and risks and harms related to it evolve and changes rapidly.

We carry out an annual review of our approach to online safety, supported by an annual risk assessment that considers and reflects the risks their children face. This is informed by local and national training and regular updates.

More information

For more information about online safety, please see Annex D of Keeping Children Safe in Education (2024).

Appendix F

No child should suffer harm of any form, either at home or at school.

Everyone who works at or visits our school has a responsibility to make sure that all of our children are safe. This leaflet has been given to you to make sure you understand what is expected of you as a visitor to our school.

Please ask the person who gave you the leaflet if you are unclear about anything in it. Please keep the leaflet with you, so that you can read it again if you need to.

If you are worried about the safety of any young person in our school, you must report this to one of the Designated Safeguarding Leads who undergo training to act in the best interests of children.

NSPCC

If you are worried about a child you can also contact the NSPCC free helpline service to speak to an NSPCC counsellor. They are available 24 hours a day, 365 days a year.

Worried about a child?

Contact our Helpline by calling 0800 500 5000 or emailing help@NSPCC.org.uk

Additional guidance is available from:

www.northamptonshirescb.org.uk



Designated Safeguarding Lead

Miss Lucy Deakin, Headteacher



Deputy Designated Safeguarding Lead

Mrs Kelly Collins, Deputy Headteacher



Deputy Designated Safeguarding Lead

Mrs Chris Baillie, HSSW



Deputy Designated Safeguarding Lead

Mr Luke Carroll, Y4, 5 & 6 Phase Leader



Deputy Designated Safeguarding Lead

Miss Sam Mitchell, KS1 Phase Leader



If you have a concern about a child, please call MASH on **0300 1261000** during office hours (8.30am – 5pm, Monday to Thursday, 8.30am – 4pm, Friday) or email mash@northamptonshire.gcsx.gov.uk. Outside office hours call the Emergency Duty Team on 01604 626938.



Safeguarding at Croyland Primary School

A GUIDE FOR VISITORS

Croyland Primary School

Croyland Road

Wellingborough

Northamptonshire

NN8 2AX

Tel: 01933 224169

Email:

bursar@croyland-pri.northants-ecl.gov.uk

Child Protection and Safeguarding;

Everybody's business,
Everybody's concern,
Everybody's responsibility

On arrival to our school, you will be asked for visitor ID. Please do not be offended by this. It forms part of our safeguarding procedures.

In order to help our staff identify individuals who are able to work with children unsupervised, we have a colour coded badge system. All staff wear **Blue Badges**. Visitors, such as professionals who have been DBS checked, wear a **Green Badge**. **Red Badges** are worn by visitors who have not had the appropriate safeguarding checks carried out on them and, therefore, need to be accompanied by a member of staff during their visit with us.

Croyland Primary School has a Safeguarding and Child Protection Policy, a copy of which is available from the school office or on our website www.croylandprimary.org.uk

What should I do if I am worried about a child?

At Croyland Primary School, we use the phrase 'respectful uncertainty' when considering safeguarding concerns. If you become concerned about a child you are working with because of:

- Comments made by a child,
- Marks or bruising on a child,
- Changes in the child's behaviour or demeanour

Please report these concerns to one of the named Designated Safeguarding Leads. Their names and pictures can be found on the back of this leaflet, on the safeguarding display in the staff room and around the school.

What should I do if a child discloses that she/he is being harmed?

Immediately record details of the disclosure, including wherever possible the exact words or phrases used by the child. Forms for the recording of information of this nature are available from Miss Durham and should be completed and returned to the Designated Lead to enable the matter to be dealt with in the appropriate way.

Please ensure you have signed and dated the record and leave your contact information with the school office. Do not leave the form with anyone other than a named Designated Safeguarding Lead.

What should I do if the alleged abuser is a member of the school staff?

You should report such allegations to the Headteacher.

What should I do if the alleged abuser is the Headteacher?

You should report such allegations to any of the other Designated Safeguarding Leads who will notify the Chair of Governors.

Governor with Safeguarding Responsibility:

Mrs Tracy Elliott, Chair of Governors

How do I assure that my behaviour is always appropriate?

Appropriate relationships with children should be based on mutual trust and respect.

As a visitor, you may find yourself working closely with children, sometimes on a one-to-one basis.

Do not photograph our children unless you are asked to do so by the class teacher. If you are asked to do so, it must be on a school device.

It is an expectation that personal mobile phones are put on silent, kept with personal belongings and kept out of sight of children.

We also have a statutory duty to prevent children from extreme and violent views and to intervene to prevent vulnerable children and young people being drawn into terrorist-related activity.

If, during your visit, you observe signs and behaviour that indicate such a vulnerability, please inform one of the Designated Safeguarding Leads as a matter of urgency.

Visitor Code of Conduct

- ~ Wear your visitor badge at all times.
- ~ Act as a positive role model at all times.
- ~ Keep information confidential.
- ~ Report any concerns about the welfare and behaviour of any member of the school community.
- ~ Never share personal contact information with a child.
- Do not use your device to film or photograph a child or adult in school.

Please help us to safeguard the children in our care by following these guidelines. Thank you for the time you have taken to read this information.

Appendix G: How We Safeguard Children at Croyland Primary School; A Guide for Parents

Any Concerns?

If you have any concerns about the conduct and behaviour of a member of our school community, or have questions about the information in this leaflet, please speak to Miss Deakin, Mrs Collins or Mrs Baillie.

Further Information

Please refer to our Safeguarding and Child Protection Policy (available on the school website or in the school office) for further information on school practices and procedures

www.croylandprimary.co.uk

If you have a concern about a child, please call MASH on **0300 1261000** during office hours (8.30am – 5pm, Monday to Thursday, 8.30am – 4pm, Friday) or email mash@northamptonshire.gcsx.gov.uk. Outside office hours call the Emergency Duty Team on 01604 626938.

NSPCC

If you are worried about a child you can also contact the NSPCC free helpline service to speak to an NSPCC counsellor. They are available 24 hours a day, 365 days a year.

Worried about a child?

Contact our Helpline by calling 0800 800 5000 or emailing help@NSPCC.org.uk.



Miss Lucy Deakin,
Headteacher

DSL



Mrs Kelly Collins, Deputy
Headteacher

DDSL



Mrs Chris Baillie,
Home School Support
Worker

DDSL



Mr Luke Carroll,
Year 4, 5 & 6 Phase
Leader

DDSL



Miss Sam Mitchell,
KS1 Phase Leader

DDSL



Safeguarding at Croyland Primary School

A GUIDE FOR PARENTS/ CARERS

Croyland Primary School

Croyland Road

Wellingborough

Northamptonshire

NN8 2AX

Tel: 01933 224169

Email: bursar@croyland-pri.northants-ecl.gov.uk

Keeping Children Safe

Working Together to Safeguard Children (Keeping Children Safe in Education 2023) requires all schools to follow the procedures for protecting children from abuse which are established by the Northamptonshire Safeguarding Children Board.

Keeping Children Safe in Education 2023 places several responsibilities on all schools, these include:

- ◆ Appointing a Designated Safeguarding Lead (DSL) and providing them with the recognised additional training they need to provide support and guidance to all staff and members of the school community on Safeguarding. DSL/ DDSLs (Deputy Designated Safeguarding Leads) are responsible for liaising with other agencies involved in safeguarding.
- ◆ Ensuring that all staff are trained in safeguarding and understand their responsibilities in this area.
- ◆ Having robust reporting systems that are effective.
- ◆ Working with other agencies as needed to ensure children's safety, including the sharing of information where there is a genuine need to do so.
- ◆ Guaranteeing online safety procedures are in place.
- ◆ Providing a secure and safe environment for children to learn in.

We fulfil these responsibilities by :

- ◆ Establishing and maintaining an environment where children feel secure, are encouraged to talk, and are listened to when they have a worry or concern.
- ◆ Providing opportunities for children to recognise and stay safe from potential risks is included within the PSHE and Computing curriculum.
- ◆ Ensuring all staff have the knowledge to recognise when a child is suffering from abuse.
- ◆ Recording incidents of abuse, in line with statutory requirements, taking advice from MASH if needed.
- ◆ Undertaking appropriate discussion with parents prior to involvement of another agency, unless to do so would place the child at further risk of harm.
- ◆ Working in partnership with other agencies to implement Child Protection Plans; Child in Need or Early Help Assessments if and when they are needed.

As parents or carers, you can help us to fulfil our responsibilities by:

- ◆ Listening carefully to your children and letting us know of any concerns as soon as possible.
- ◆ Reinforcing safeguarding and online safety messages that are given in our school newsletters and on the school website.
- ◆ Letting us know about any changes in telephone numbers so that communication can always be made.

What to do if you think a child is at risk of abuse or neglect

Immediate danger

If you think a child is in immediate danger, call the police on **999**.

Immediate concern

If there is an immediate safeguarding concern where a child is deemed at risk or has potentially suffered significant harm, the MASH team (The Multi-Agency Safeguarding Hub) should be contacted immediately.

For example:

- Allegations/concerns that the child has been sexually/physically abused.
- Concerns that the child is suffering from severe neglect or other severe health risks.
- Concern that a child is living in or will be returned to a situation that may place him/her at immediate risk.
- The child is frightened to return home.
- The child has been abandoned or parent is absent.

Additional guidance is available from:

www.northamptonshirescb.org.uk



Appendix H: Safeguarding Poster



Safeguarding Children at Croyland Primary

Our school has a duty to investigate where there is any cause to suspect that a child is suffering, or likely to suffer, significant harm.

If you believe a child in our school may be at risk please talk to one of the Designated Safeguarding Leads.

Our school's Designated Safeguarding Leads are:



Miss L Deakin
DSL



Mrs K Collins
DDSL



Mrs C Baillie
DDSL



Mr L Carroll
DDSL



Miss S Mitchell
DDSL

If you have a concern about a professional or volunteer who works with children, in any setting, you must contact the Designated Officer for advice and guidance

The office have contact details.



Appendix I: DSL Job Description

Croyland Primary School

Designated Safeguarding Lead Job Description

Job title: Designated Safeguarding Lead (DSL)

Reporting to: Chair of Governors

Responsible for: All pupils and staff

Main purpose

The DSL will take responsibility for safeguarding and child protection throughout the school. They will take part in strategy discussions and inter-agency meetings, and contribute to the assessment of children. They will advise and support other members of staff on child welfare and child protection matters, and liaise with relevant agencies such as the local authority and police. Some safeguarding activities may be delegated to deputies, although the DSL will retain lead responsibility for the work of deputies and will ensure it is completed to the highest standard.

Duties and Responsibilities

Managing referrals

- Refer cases of suspected abuse to the local authority children's social care (NSCB)
- Support staff who make referrals to local authority children's social care (NSCB)
- Refer cases where a crime may have been committed to the police.
- Refer cases to the Disclosure and Barring Service where a person is dismissed or left due to risk or harm to a child.
- Keep detailed, accurate and secure written records of concerns and referrals.

Working with staff and other agencies

- Ensure staff can access Croyland Primary School's Child Protection and Safeguarding and Safeguarding Policy and procedures. To make sure they have the opportunity to discuss and demonstrate their understanding.
- Liaise with the local authority's designated officer (DO) for child protection concerns in all cases where a member of school staff is involved.
- Liaise with staff on matters of safety and safeguarding when deciding to make a referral.
- Act as a source of support, advice and expertise of staff involved in child protection and safeguarding.
- Understand the assessment process for providing early help and intervention.
- Develop a working knowledge of how local authorities conduct a child protection case conference and a child protection review conference.
- Attend and contribute to child protection case conferences effectively when required to do so.
- Lead staff in challenging evidently poor practice and consult with social care line managers.

Training

- Undergo training to develop and maintain the knowledge and skills required to carry out the role.
- Undergo Prevent training to ensure Croyland Primary School meets the requirements of Prevent duty.
- Ensure there are named staff who have the training and the skills to lead Early Help Assessments.
- Provide advice, support and training to staff protecting children from the risk of radicalisation.
- Undergo training on Female Genital Mutilation (FGM) and be able to provide advice and support to staff on protecting and identifying children at risk of FGM.
- Refresh knowledge and skills at least annually and remain up to date with any developments relevant to the role.
- Undertake Refresher DSL training every 2 years as currently required.

Raise Awareness

- Ensure the schools Child Protection and Safeguarding Policy, and associated policies are known, understood and used appropriately.
- Ensure that, by various means, child protection and safeguarding remains the day to day priority of all Croyland Primary School staff.
- Ensure that received and relevant safeguarding alerts from the NSPCC are shared with the whole staff team.
- Maintain a school safeguarding noticeboard to ensure all required information is readily available.
- Work with the governing body to ensure our Child Protection and Safeguarding Policy and associated documents are reviewed annually (as a minimum) and the procedures and implementation are updated and reviewed regularly.
- Ensure the Child Protection and safeguarding Policy is available and easily accessible to everyone in the school community.
- Ensure that parents have the opportunity to read the Child Protection and Safeguarding Policy and are aware that referrals about suspected abuse or neglect may be made, and the role of the school in this.
- Link with the Local Safeguarding Children's Board (LSCB) to make sure staff are aware of training opportunities and the latest policies on safeguarding.
- Be alert to the specific needs of children in need, those with special educational needs and young carers.
- Encourage a culture of listening to children among all staff, ensuring that children's feelings are heard where the school puts measures in place to protect them.

Other areas of responsibility

- Where children leave the school, securely transfer their child protection file to their new school as soon as possible, separately from the main pupil file.
- Ensure statutory roles are allocated within the school: teacher responsible for LAC/ Post LAC/ medical.
- Ensure systems are in place to ensure the DSL can meet with the deputies to discuss children and their needs regularly (at least 2 x monthly).
- Ensure all aspects of Croyland Primary Schools safeguarding agenda are led by staff members whose knowledge and expertise ensure the role is effectively carried out. Eg. E-safety lead.
- Undertake safer recruitment training and support the school to follow best practice.
- Monitor the Single Central Record and ensure it complies with relevant legislation. Share monitoring with the governing body.
- Provide safeguarding reports to the governing Board.
- Model best practice and uphold the principles of confidentiality and data protection at all times.

The DSL will be required to safeguard and promote the welfare of children and children, and follow school policies and the staff code of conduct. During term time, the DSL should always be available during school hours for staff in the school to discuss any safeguarding concerns. Ideally, this will be in person, but can also be via phone or video calling in exceptional circumstances. Please note that this list of duties is illustrative of the general nature and level of responsibility of the role. It is not a comprehensive list of all tasks that the DSL will carry out. The postholder may be required to do other duties appropriate to the level of the role.



SEE SOMETHING
SAY SOMETHING
DO SOMETHING
0303 003 0105
safeguard@stjohn.org.uk

SAFEGUARDING YOURSELF AND OTHERS 2021 BRIEFINGS

NUMBER 9 • 5 MAY



ADVERSE CHILDHOOD EXPERIENCES: A HUGE IMPACT ON DEVELOPMENT

The experiences we have early in our lives and particularly in our early childhoods have a huge impact on how we grow and develop, our physical and mental health and our thoughts, feelings and behaviour

Two important factors that influence this are the quality of our early relational attachments and the impact of Adverse Childhood Experiences (ACEs).

Growing up while experiencing ACEs such as abuse, neglect, community violence, homelessness or being in a household where adults are experiencing mental health issues or harmful alcohol or drug use, can have a long-lasting effect on people's lives.

**GROWING UP WHILE
EXPERIENCING ADVERSE
CHILDHOOD EXPERIENCES
CAN HAVE A LONG-LASTING
EFFECT ON PEOPLE'S LIVES**

